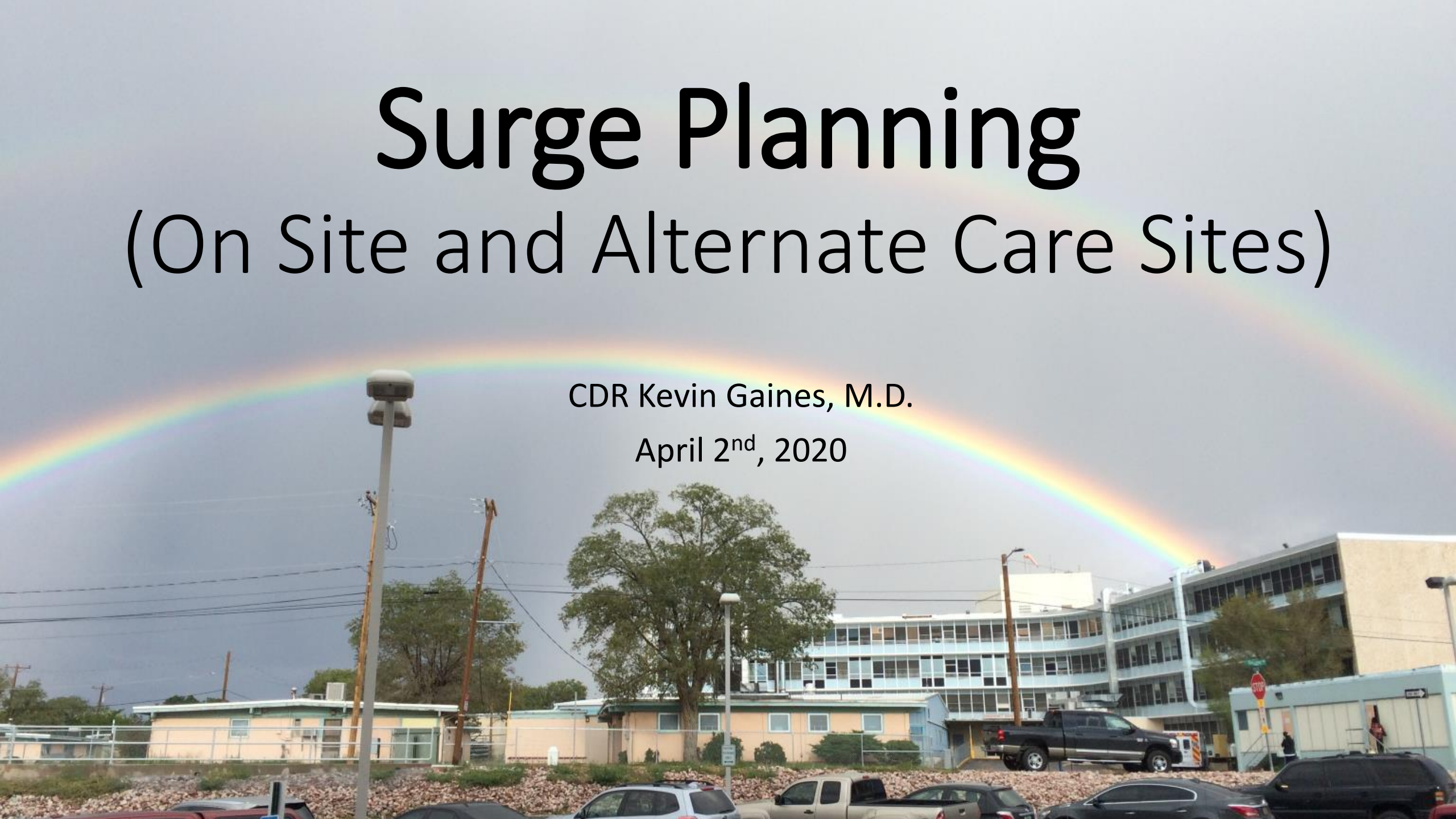


Surge Planning

(On Site and Alternate Care Sites)

CDR Kevin Gaines, M.D.

April 2nd, 2020



Disclosures

None



Objectives

- Sources of information on facility surge planning will be provided
- “In-house” Surge planning/Options
- Alternate Care Sites Considerations

Repurposing Facility Space

A photograph of a hospital room, likely a pre-operative area or PACU, with various medical monitors and equipment. The room is brightly lit, and a patient bed is visible in the foreground. The text is overlaid in a large, bold, red font.

- Pre-op/PACU as ICU spaces?
- Offices as Med/Surge Wards
- Identify any negative pressure rooms that have been repurposed and utilize them for isolation rooms.
- Consider Oxygen needs
- Sinks/Bathrooms available?
- HVAC systems?

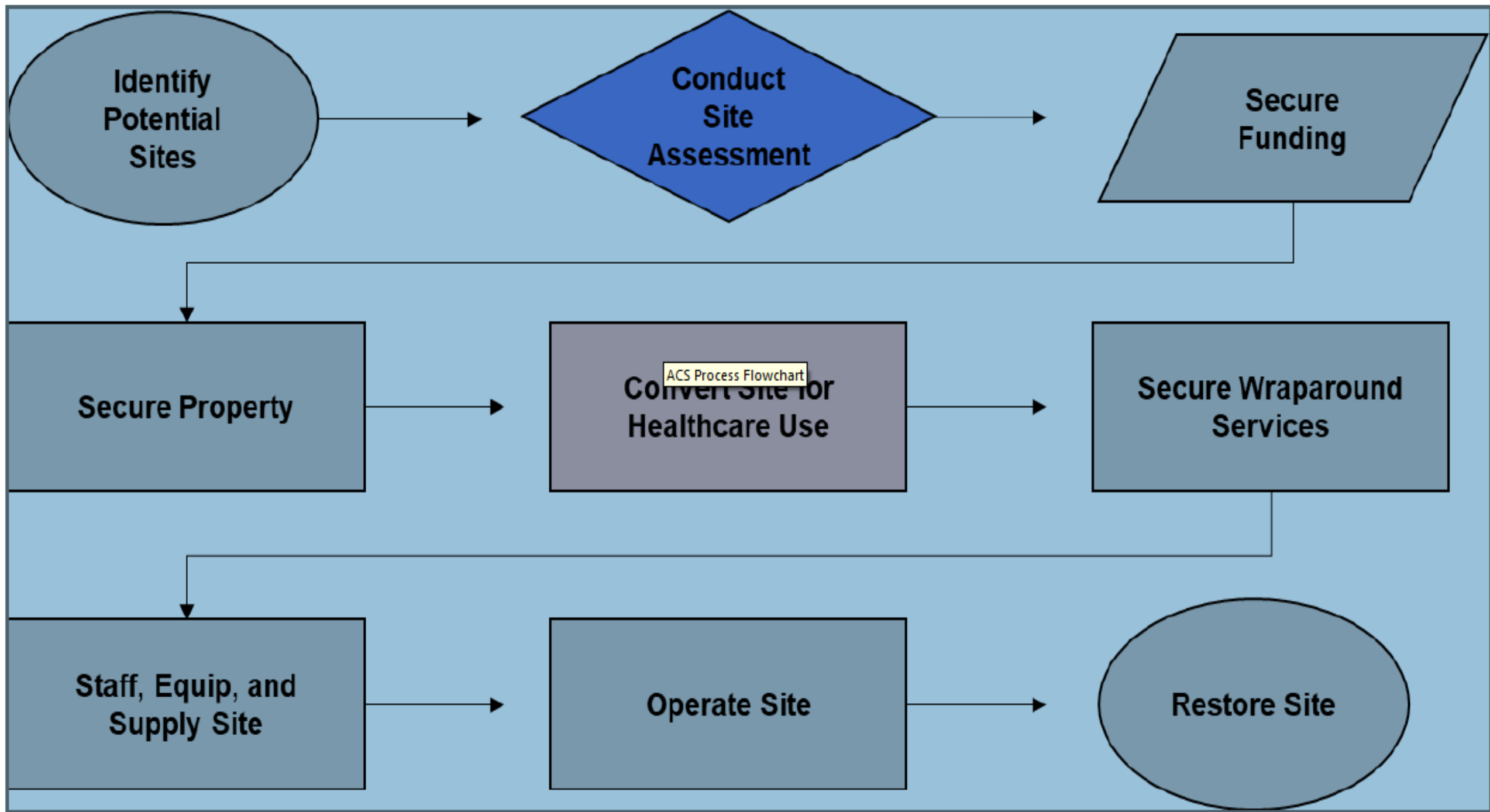






Alternate Care Sites

- Guidelines Available
 - * Federal Healthcare Resilience Task Force Alternate Care Site (ACS) Toolkit
 - * CDC Guidelines
- Army Corps of Engineers may be able to assist in assessing sites for suitability
- Partner with Tribal/County/State EOC's for assistance



Identify Potential Sites

Conduct Site Assessment

Secure Funding

Secure Property

ACS Process Flowchart
Convert Site for Healthcare Use

Secure Wraparound Services

Staff, Equip, and Supply Site

Operate Site

Restore Site

Alternate Care Site – Considerations

- Specifically for COVID-19, Oxygen Delivery to patients in a nonmedical facility
- HVAC Considerations – ability to pull in fresh air vs. recirculating
- Toilet and shower availability
- Fire Detection and Suppression Systems
- Food Preparation and Storage
- Donning and Doffing Area
- Medical and Pharmaceutical Supply Storage

Alternate Care Site – Considerations

The background of the slide is a photograph of a large, modern building with a distinctive, angular, and somewhat futuristic architectural style. The building features a prominent, wide overhanging roof that creates a large, sheltered area. The facade is primarily composed of glass panels, reflecting the sky. The building is set against a clear, light blue sky. The overall impression is one of a high-tech, modern facility.

- Parking and Traffic Control
- Security
- Proximity to Hospital(s)
- Infection Prevention and Safety
- IT infrastructure

Alternate Care Site – Considerations

- **PARTNERSHIPS**

