



Vaccine Planning Through Cooperation and Partnership

Shoshone-Bannock Tribal Health and Human Services
Shoshone-Bannock Community Health Center
Indian Health Service-Fort Hall Service Unit



Introductions

- › CAPT Lori Snidow, DDS, USPHS
 - Indian Health Service, Fort Hall Service Unit
 - Chief Dental Officer, FHSU ICT Planning Chief, Liason Officer
- › Christine Waterhouse, BS
 - Shoshone-Bannock Community Health Center
 - Director
- › Sunny Stone, MPH, MCHES
 - Shoshone-Bannock Tribal Health and Human Services
 - QI Coordinator, Diabetes Program Manager, IC Vulnerable Population Branch Director

Shoshone-Bannock Community Health Partners

- › Shoshone-Bannock Tribal Health and Human Services (THHS)
 - 638/Grant Funded
 - Medical/Clinical Services (Maternal Child Health, Diabetes Program, CHR, Field Nursing, Pt Navigation)
 - Behavioral Health (Counseling, Substance Abuse, Social Services, Victim's Assistance)
 - Community Health Resources (Health Education-Contact Tracing, PRC, Recreation)
- › Shoshone-Bannock Community Health Center (SBCHC)
 - HRSA/Grant funded
 - Medical/Clinical Services (Pharmacy, Laboratory, Primary Care)
 - Behavioral Health Services (MAT)
- › Indian Health Service, Fort Hall Service Unit
 - IHS/Grant funded
 - Medical/Clinical Services (Primary Care, Pharmacy, Laboratory, Optical)
 - Dental Services



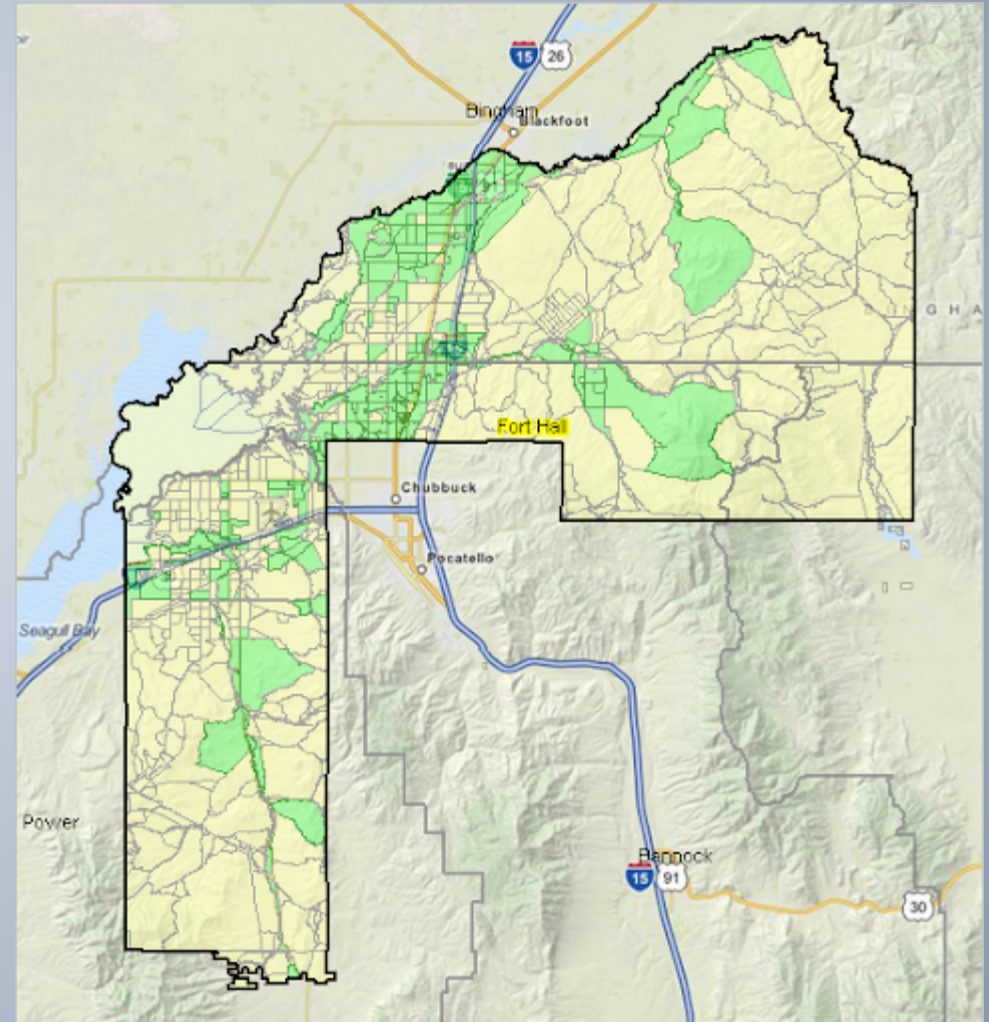
Planning Process


- › Weaknesses/Strengths
- › Measuring capacity
- › Tracking, documentation, and forecasting
- › Identifying and classifying priority populations
- › Vaccine Expertise



Distribution of Vaccine to Population (Health Care and Essential Workers Edition)

- › Leveraging relationships
- › Taking it on the road
- › Teamwork





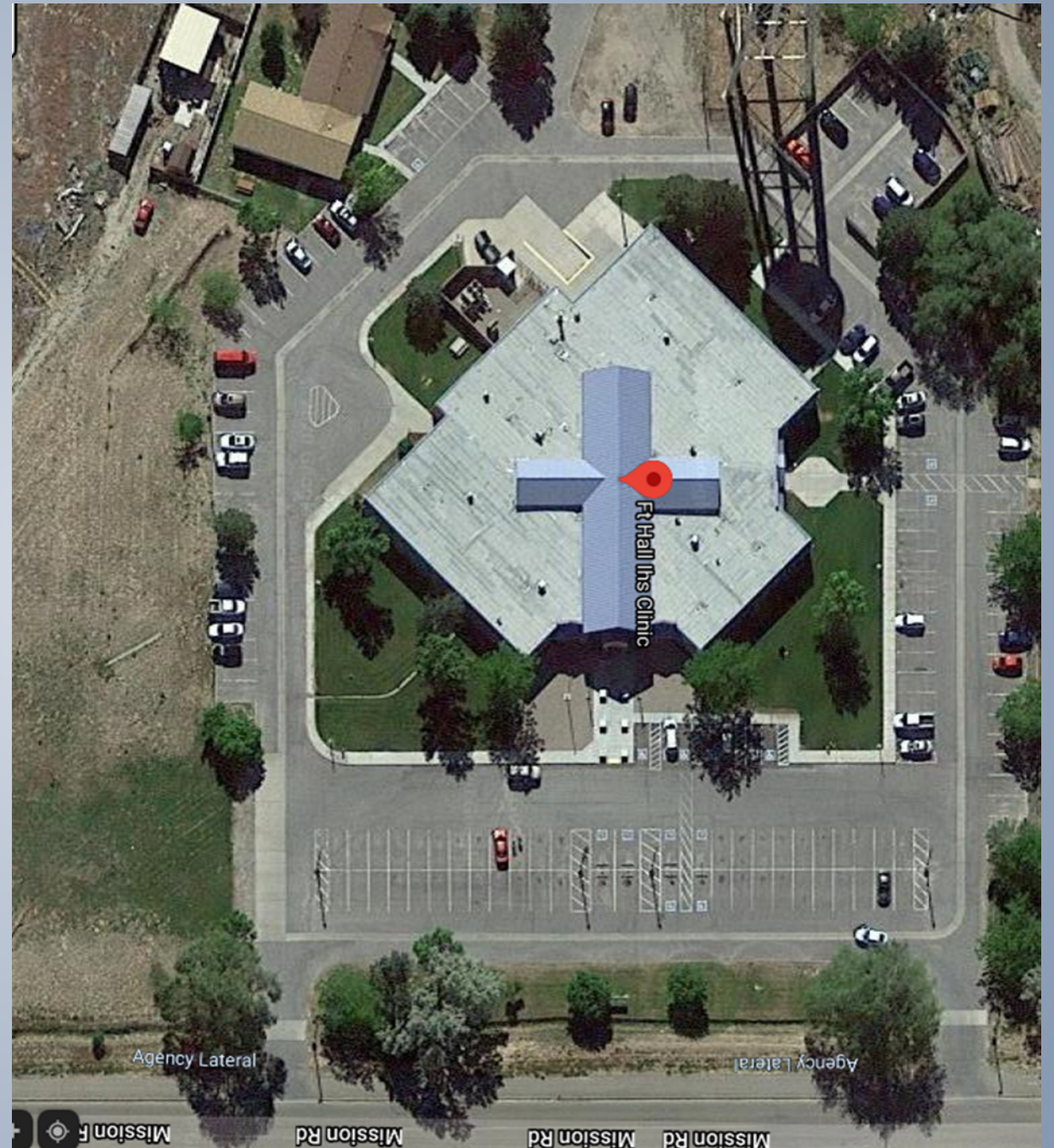
Distribution of Vaccine to Population (Vulnerable Population Edition)

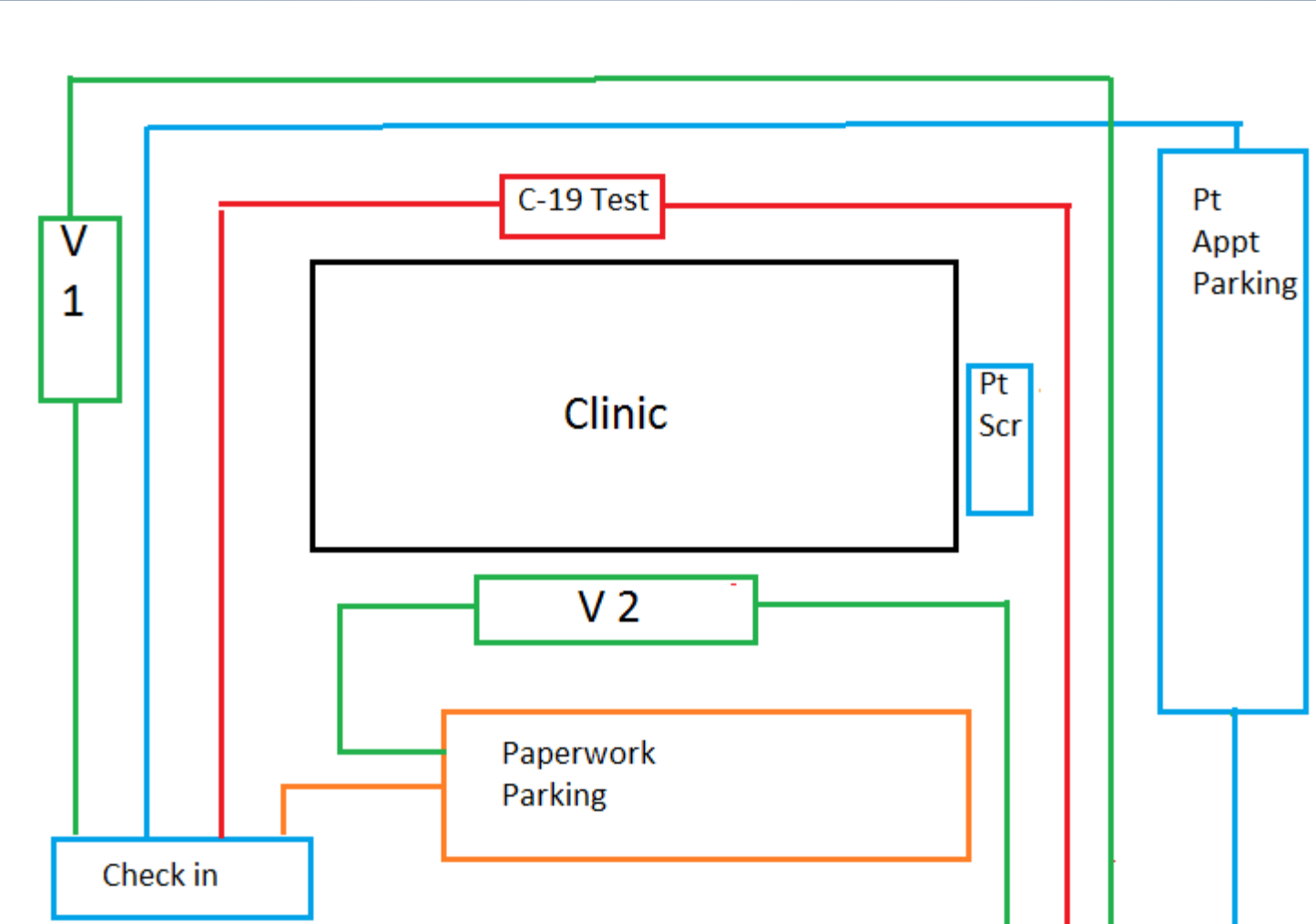
- › Vaccine education
- › Publicizing events
- › TEAMWORK



The MAIN Event POD Challenges

- › Limited staff
- › Weather
- › Traffic
- › EHR notes
- › Screening for priority
- › Maintaining testing
- › Urgent care







Special Thanks

- › Jamie Furniss, IHS HIM
 - RPMS extraction expert
- › Ashley Ballensky, IHS RN; Michelle Briggs, THHS LPN
 - Vaccine panthomaths