

Community Health Aide Program (CHAP) ECHO Learning Collaborative

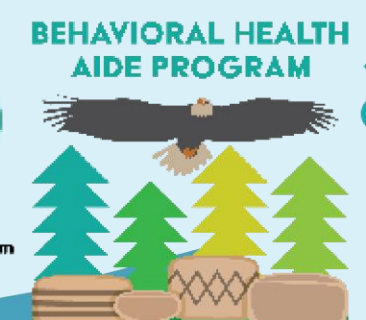
August 8, 2023



COMMUNITY HEALTH AIDE PROGRAM



Dental Health Aide Program



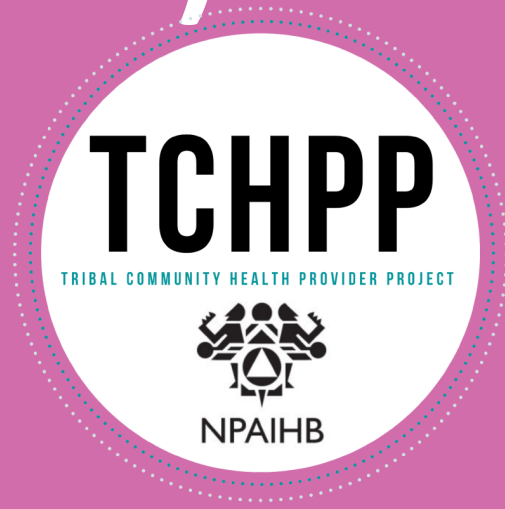
BEHAVIORAL HEALTH
AIDE PROGRAM



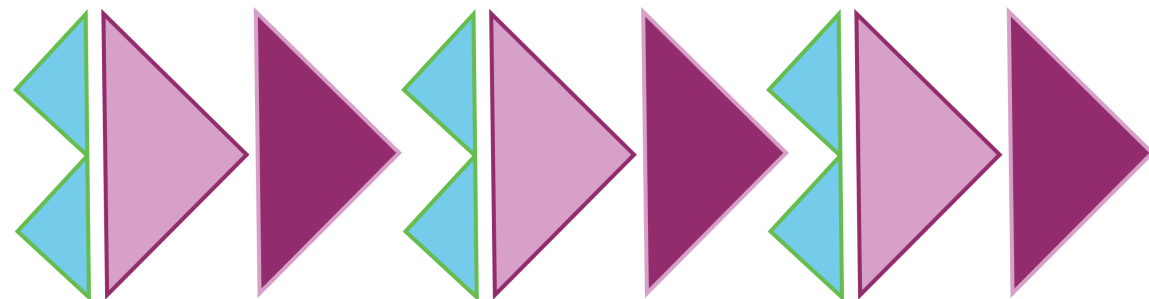
NPAIHB

Tribal Community Health Provider Program (TCHPP)

ESTABLISHED 2015



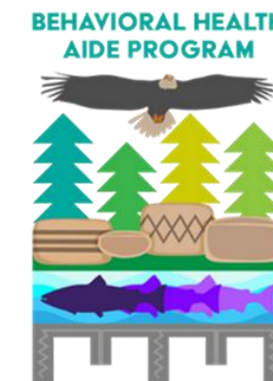
NORTHWEST PORTLAND AREA
INDIAN HEALTH BOARD
Indian Leadership for Indian Health



**Dental Health
Aide/Therapist
(DHA/T)**



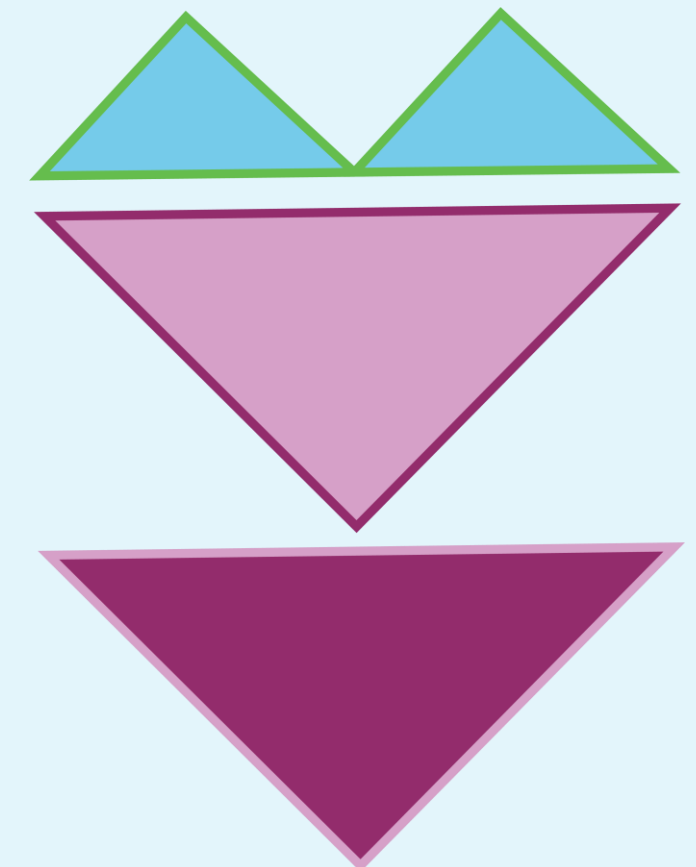
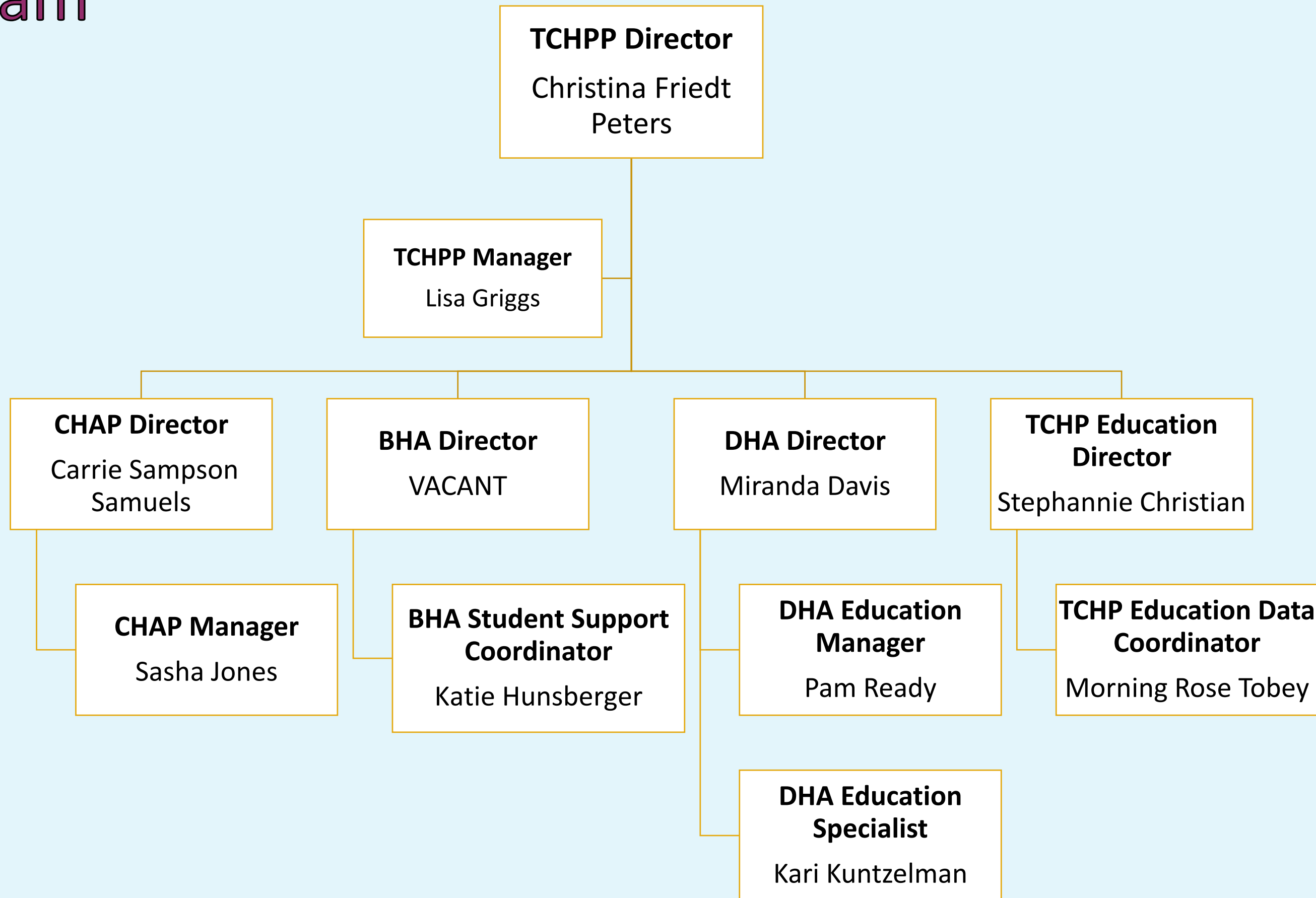
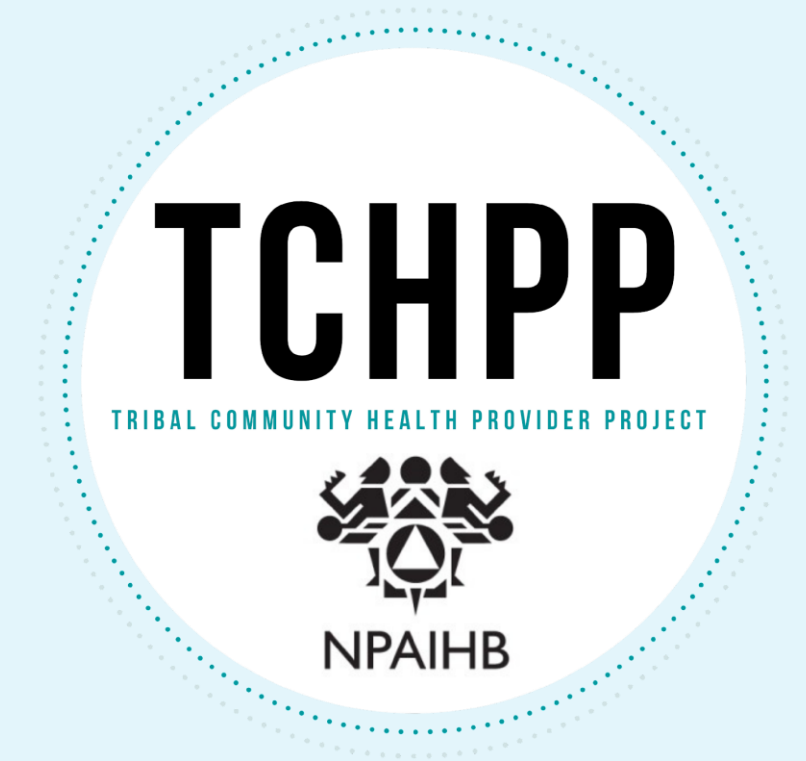
**Behavioral Health
Aide/Practitioner
(BHA/P)**



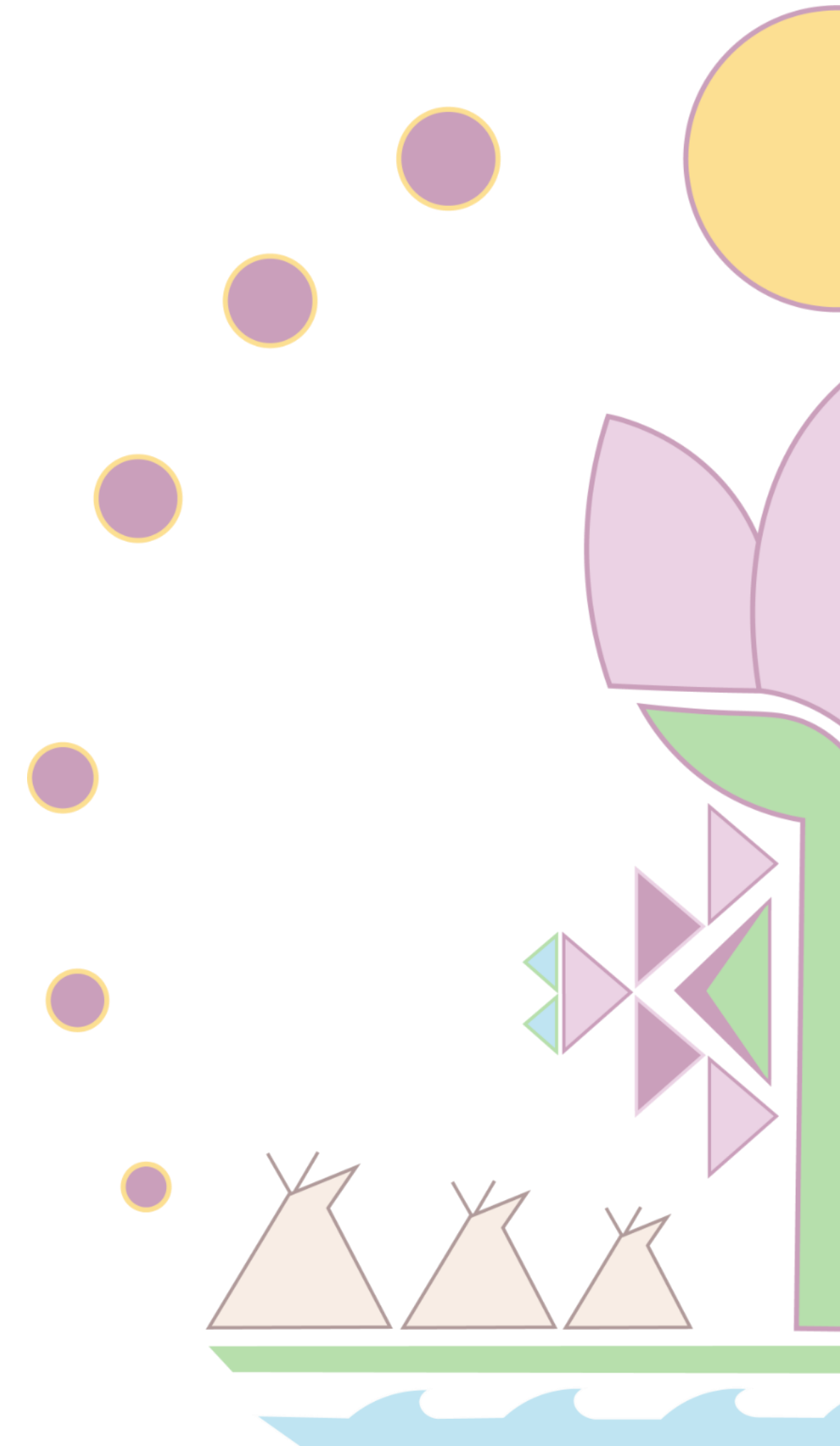
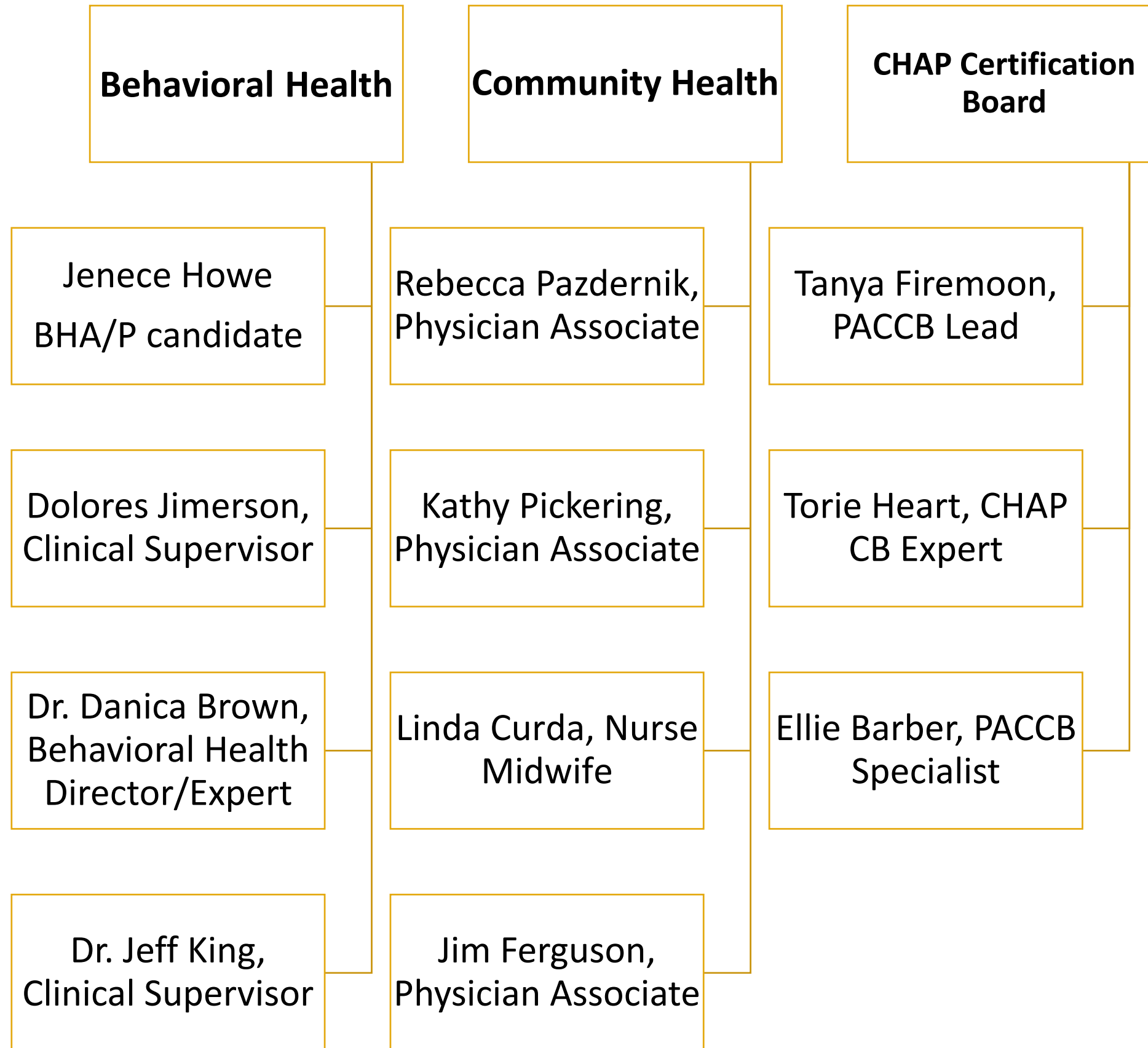
**Community Health
Aide/Practitioner
(CHA/P)**



Tribal Community Health Provider Program Team



Subject Matter Experts



CHAP Disciplines

Dental Health Aide/Therapist (DHA/T)

DHATs are highly-trained primary oral health care providers that have a narrow scope of practice, focusing on routine and preventive services which include simple extractions and restorations. DHAs focus on outreach and prevention and work with advanced providers to provide restorative care.



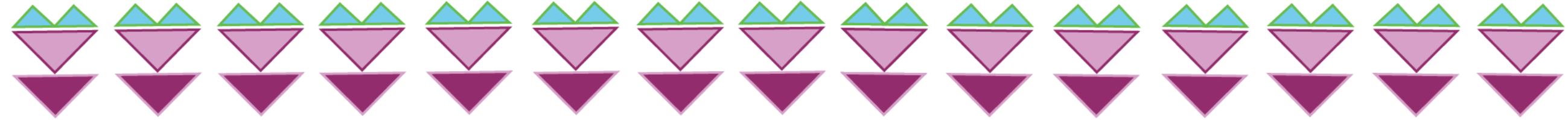
Behavioral Health Aide/Practitioner (BHA/P)

BHAs are counselor's, health educators, and advocates. BHAs help address individual and community-based health needs such as alcohol, drug and tobacco abuse and mental health. BHAs use a combination of Western and traditional-based practices to provide care.



Community Health Aide/Practitioner (CHA/P)

CHA/Ps are certified primary and emergency care clinicians who have close cultural ties and connections to the communities they serve. They work within the tribal health and human systems and practice under the supervision of a licensed clinical provider.



NPAIHB Community Health Representative Program



COMMUNITY HEALTH
REPRESENTATIVE PROGRAM
Powered by NPAIHB

The Community Health Representative (CHR) Program is a unique concept for providing health care, health promotion, and disease prevention services. CHRs have demonstrated how they assist and connect with the community, and their work has become essential to the spectrum of Tribal community-oriented primary health care services. CHRs are great advocates, in part, because they come from the communities they serve and have tribal cultural competence. Their dedicated work has assisted many to meet their healthcare needs. The health promotion and disease prevention efforts that CHRs provide have also helped people from the community improve and maintain their health.

CHR **Community Health Representative Education Program**

**Now recruiting for
August 2023 cohort!**

Northwest Portland Area Indian Health Board is offering CHR training through Idaho State University!

Core course training offers culturally specific pathways and various education setting sepcially designed for Indigenous students

NW Cohort Recruitment
**Anyone interested in
becoming a CHR**



MorningRose Tobey
TCHP Education Data
Coordinator
mtobey@npaihb.org



Stephannie Christian
TCHP Project Director
schristian@npaihb.org



COMMUNITY HEALTH
REPRESENTATIVE PROGRAM
Powered by NPAIHB

**Do you want to get paid
to go through training?
Earn up to \$3,500 while
you learn!**



What is the Application Process?

- NPAIHB CHR Application
- Send in a resume
- Register and Enroll for CHW/CHR Core Course online

Application Closes

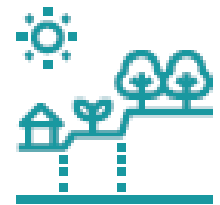
8.23.2023



Opportunity to earn
up to \$3,500 stipend
while you learn.



Students will earn a
CHR Certificate and use
it as a stepping stone
into a Medical, Dental,
or Behaviroal Health
career!



Be a part of a
community of support
and circle of care as
we grow into a
Tribally-specific
workforce.

What Support does Northwest Portland Area Indian Health Board (NPAIHB) Offer?

Stipend funding, electronic and medical equipment, school supplies, connection to Tribal Elders and introduction working in a Tribal clinic, leadership development opportunities.

CHR Core Curriculum

Begins 8/28/23

Consists of 8 weeks of didactic training online.

+ 2 live zoom meetings with Instructors

+ 2 days of in person training and skills

Unit 1: Intro to the Course; Roles and Boundaries

Unit 2: Effective Communication

Unit 3: Cultural Competency

Unit 4: Key Concepts in Health

Unit 5: Outreach

Unit 6: Organization, Time Management and Documentation

Unit 7: Navigating Health Insurance

Unit 8: Individual and Community Assessment

Unit 9: Crafting and Presenting a Case

Unit 10: Advocacy and Community Capacity Building

Unit 11: Introduction to Health Literacy

Unit 12: Care Coordination and Systems Navigation

Unit 13: Education to Promote Healthy Behavior Change

Unit 14: Self Care and Customer Service

Unit 15: Behavioral Health and Substance Abuse

Unit 16: Oral Health

Unit 17: Cardiovascular Health

Unit 18: Diabetes

Unit 19: Family Care

CHR Advanced Curriculum

Begins November 2023

Consists of an additional 6 weeks of online didactic work

+ 2 days of in person training/skills

+ 36 hours of clinical shadowing and mentoring

Unit 1: Intro to Community Health Programs

Unit 2: Medical Documentation

Unit 3: Anatomy and Physiology

Unit 4: Vital Signs

Unit 5: Traditional Foods and Herbal Remedies

Unit 6: Dental health and hygiene

Unit 7: Maternal Child Health

Unit 8: Medication Skills

Unit 9: Respiratory Disease

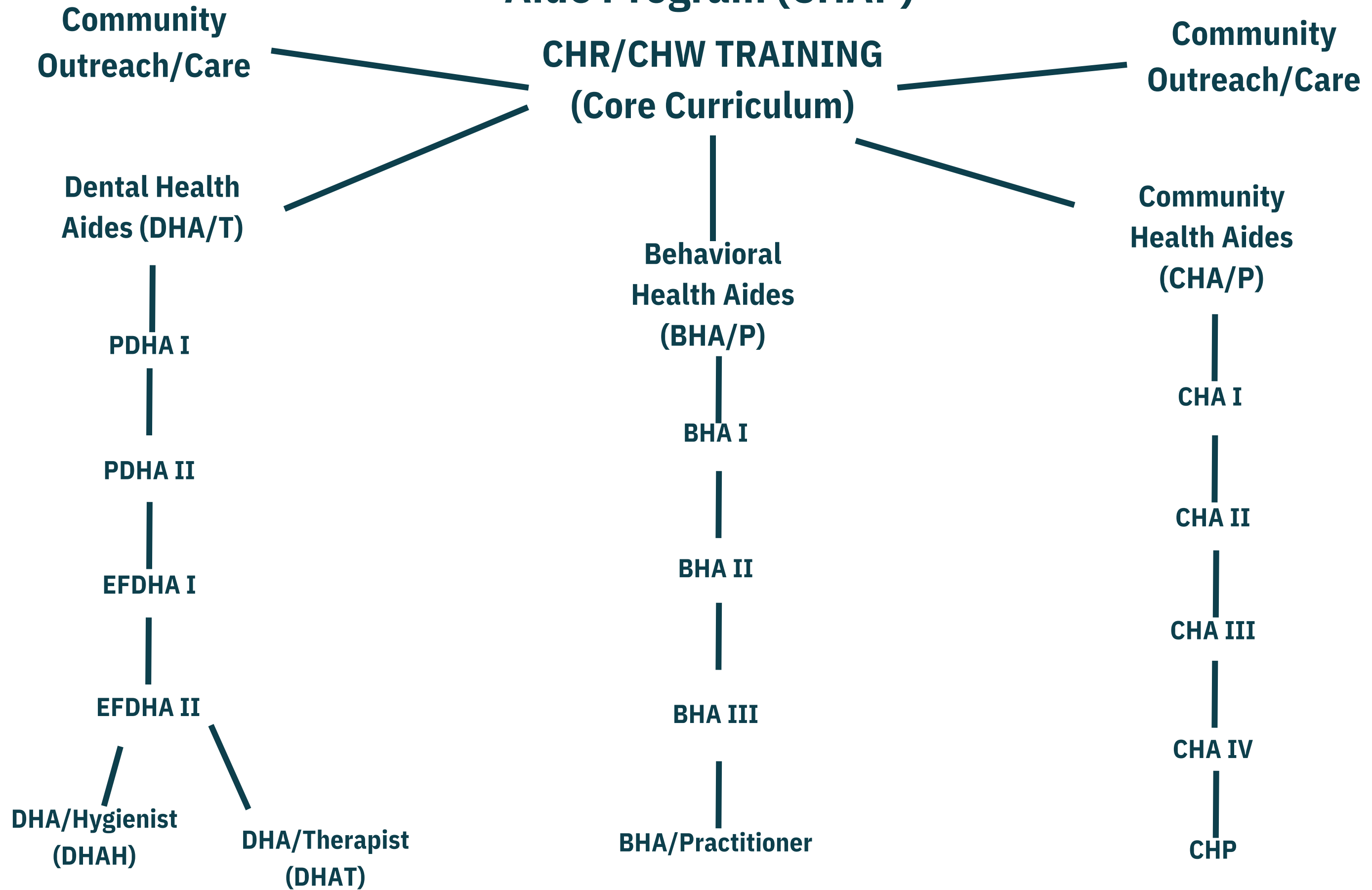
Unit 10: Medical Math

Unit 11: Common Cancers among AI/AN

Unit 12: Behavioral Health Issues



Portland Area (OR, ID, WA) Community Health Aide Program (CHAP)

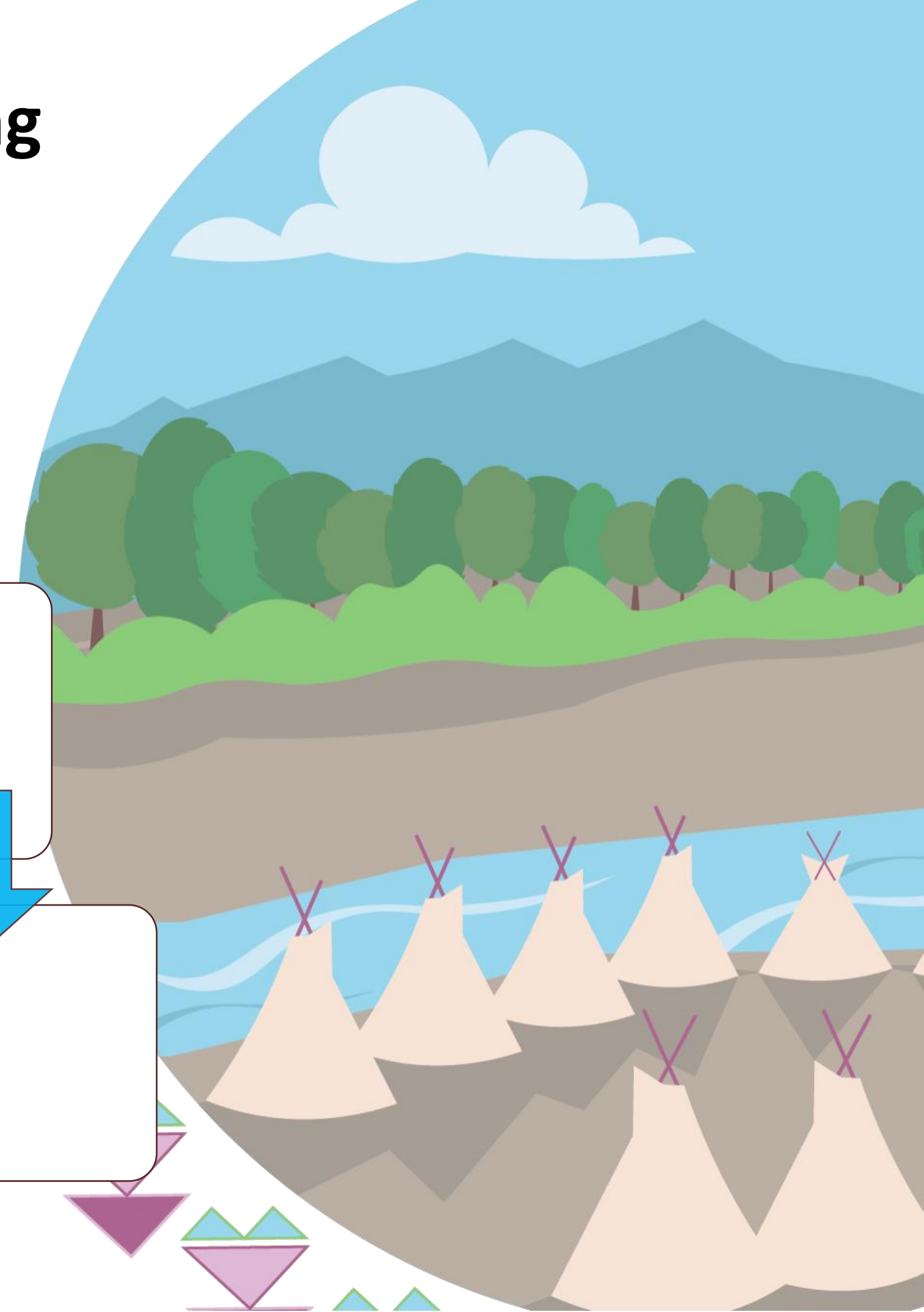


Levels of Community Health Aide Training

1) Community Health Representative (CHR)

2) Community Health Aide (CHA)

3) Community Health Practitioner (CHP)



Northwest Community Health Representative Training

- Training Outline:

- BLS with skills
- 48 hours of core education
- 48 hours of advanced education
- 48 hours of skills/clinicals

Total: 144 hours total to earn a Certificate of Completion

Scope of Work:

- Take vital signs
- Transport patients to and from appointments
- Help patient's fill out medical forms
- Work with case managers/care coordinators to get referrals for patients
- Home checks for Elders (medication box filling, fall precaution checks)
- Telephone check-ins on home detox patients to include gathering intake
- Community education on opiate addiction and training families on how to use Nasal Narcan
- Community education on alcohol addiction and services to help in the community
- Council patients on how to use metered-dose inhalers
- Council patients on how to use blood glucose monitors and track blood sugars
- Council teens on safe sex habits: how to use a condom, education on birth control options
- Provide disease prevention and health promotion education materials at community events and gatherings

1)

Community Health Representative (CHR)



2)

Community Health Aide (CHA)

3)

Community Health Practitioner (CHP)



Northwest Community Health Aide Training

- Training Outline:

- 320 hours of didactic training
- 200 hours clinicals
- 80 patient encounters

Total: 520 hours total to earn a CHA Certificate

Scope of Work:

- See acute care patients
- Triage basic emergency patients
- See diabetic patients: diabetes chronic care visits to include foot care maintenance
- See hypertensive patients: chronic care visits to include BP checks
- See chronic care asthma patients: To include metered dose inhaler education
- STI screening and treatment
- Elder Screening
- Recheck visits

1)

Community Health Representative (CHR)

2)

Community Health Aide (CHA)

3)

Community Health Practitioner (CHP)



Northwest Community Health Practitioner Training

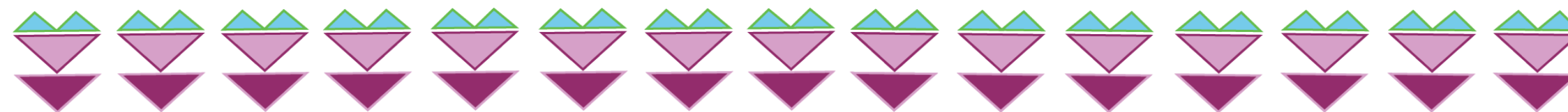
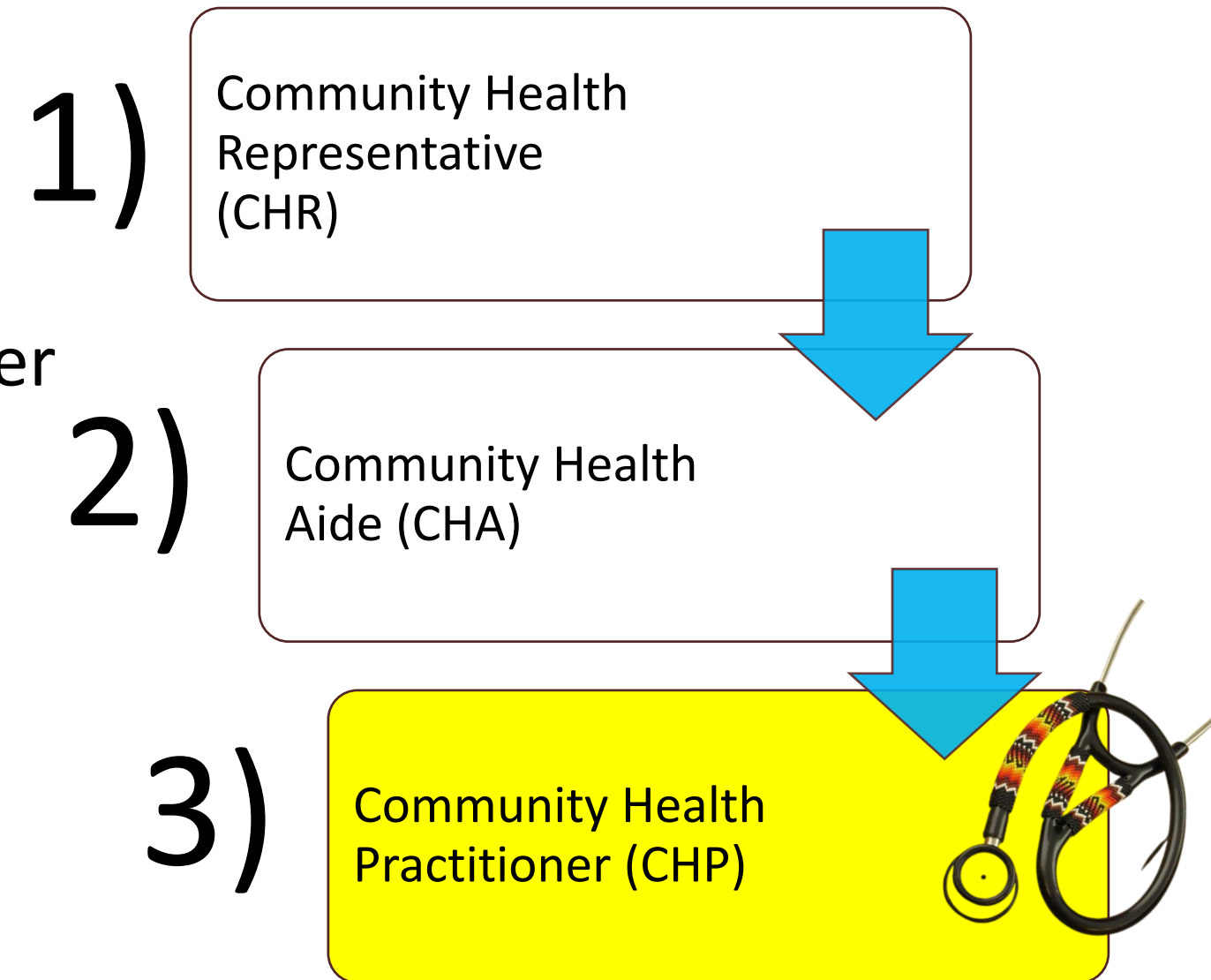
- Training Outline:

- 320 hours of didactic training
- 400 hours clinicals
- 132 patient encounters

Total: 720 hours total to earn a Community Health Practitioner Certificate

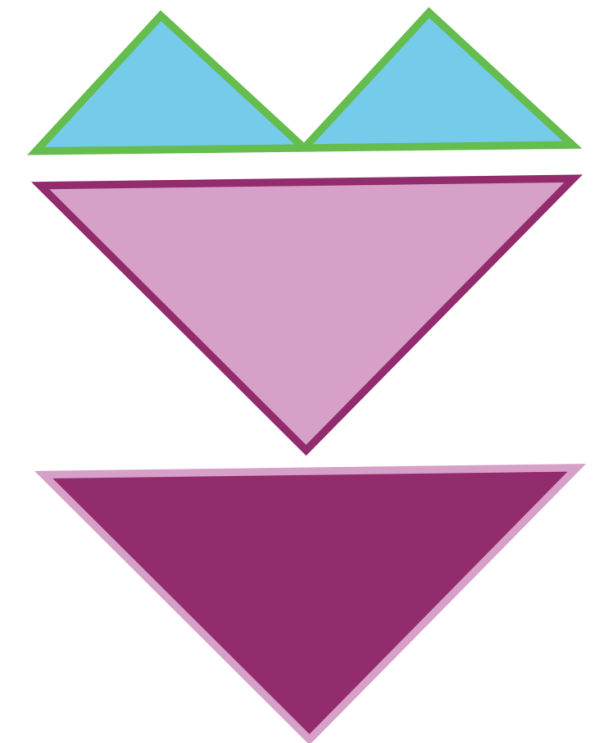
- Scope of Work:

- See return prenatal patients
- See well child patients
- See Addiction Medicine patients
- Preventative health: Pap Smears, CBE
- Elder Care
- Emergent Care



Potential Methods of CHA/P Integration

- Acute care visits
- Triage/case management
- Basic chronic care visits
- Well and sick child visits
- Wound care visits
- Prenatal care visits
- STI clinics
- Vaccination Clinics
- Extending clinic hours
- Providing on call services
- Seeing after hours acute visits/phone consultation to reduce ER visits



**BEHAVIORAL HEALTH
AIDE PROGRAM**



THE PACIFIC NORTHWEST'S

**BHA
EDUCATION
PROGRAM**

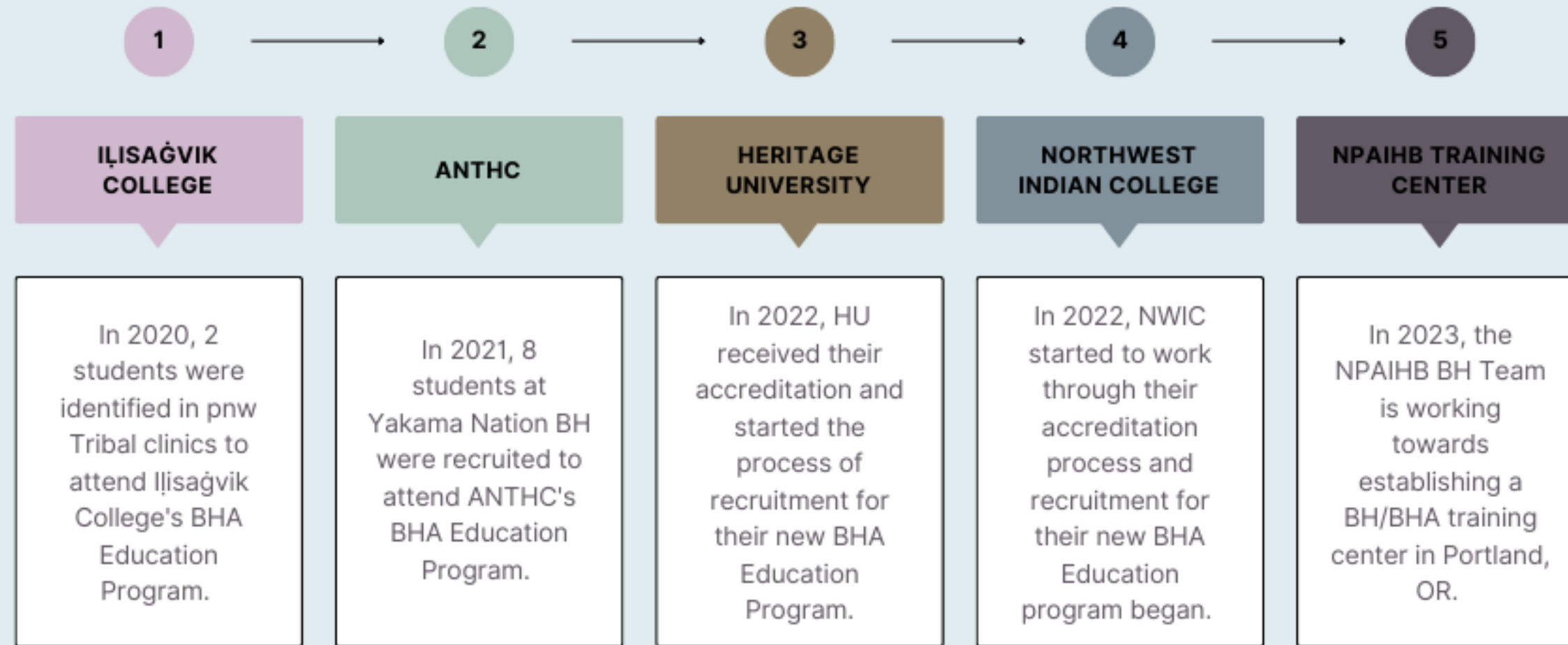


BEHAVIORAL HEALTH AIDE (BHA)

A BACKGROUND

BHAs have a wide variety of skills, knowledge, and talents. They are advocates, natural healers, counselors, empaths, and natural helpers who are responsive to the need for mental/behavioral health services in their Tribal communities. They are individuals whom are committed to providing individual and community support to address the challenges that Native peoples face in regards to substance misuse, mental health struggles and other health disparities.

BHA Education Program Postsecondary Institutions



NORTHWEST BHA EDUCATION PROGRAM

HERITAGE UNIVERSITY

- Private university in Toppenish, Washington near Yakama Nation
- **Behavioral Health Aide Certificate**
- Semester-Based
- Some in-person classes with some online sessions
- 2 year program



NORTHWEST INDIAN COLLEGE

- Tribal College on Lummi Nation in Bellingham, Washington
- **Associate in Technical Arts in Behavioral Health Aide**
- Quarter/Term-based
- Mostly online courses
- 2 year program



NOW RECRUITING FOR THE 3RD COHORT!

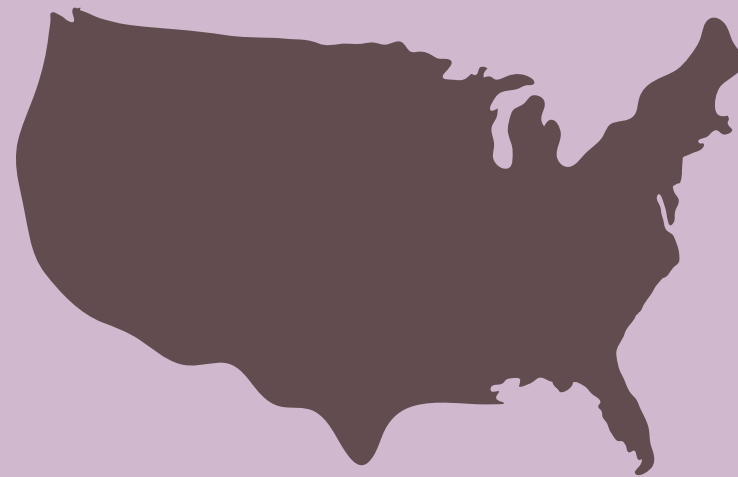
Please reach out to our BHA Staff for application, enrollment, and registration questions.

BHA STUDENT OVERVIEW OF ALL COHORTS

COMMUNITY IMPACT AND NUMBERS



Total BHAs = 48



States Represented =
Oregon, Idaho, and
Washington



PACCB Certification
Eligible BHA Students =
26



HRSA FAMILY IMPACTED OPIOID GRANT

This grant has supported the development of standing up BHA Education Programs in the NW. It provides crucial support for BHA students in terms of tuition, school supplies, and stipend for additional expenses.

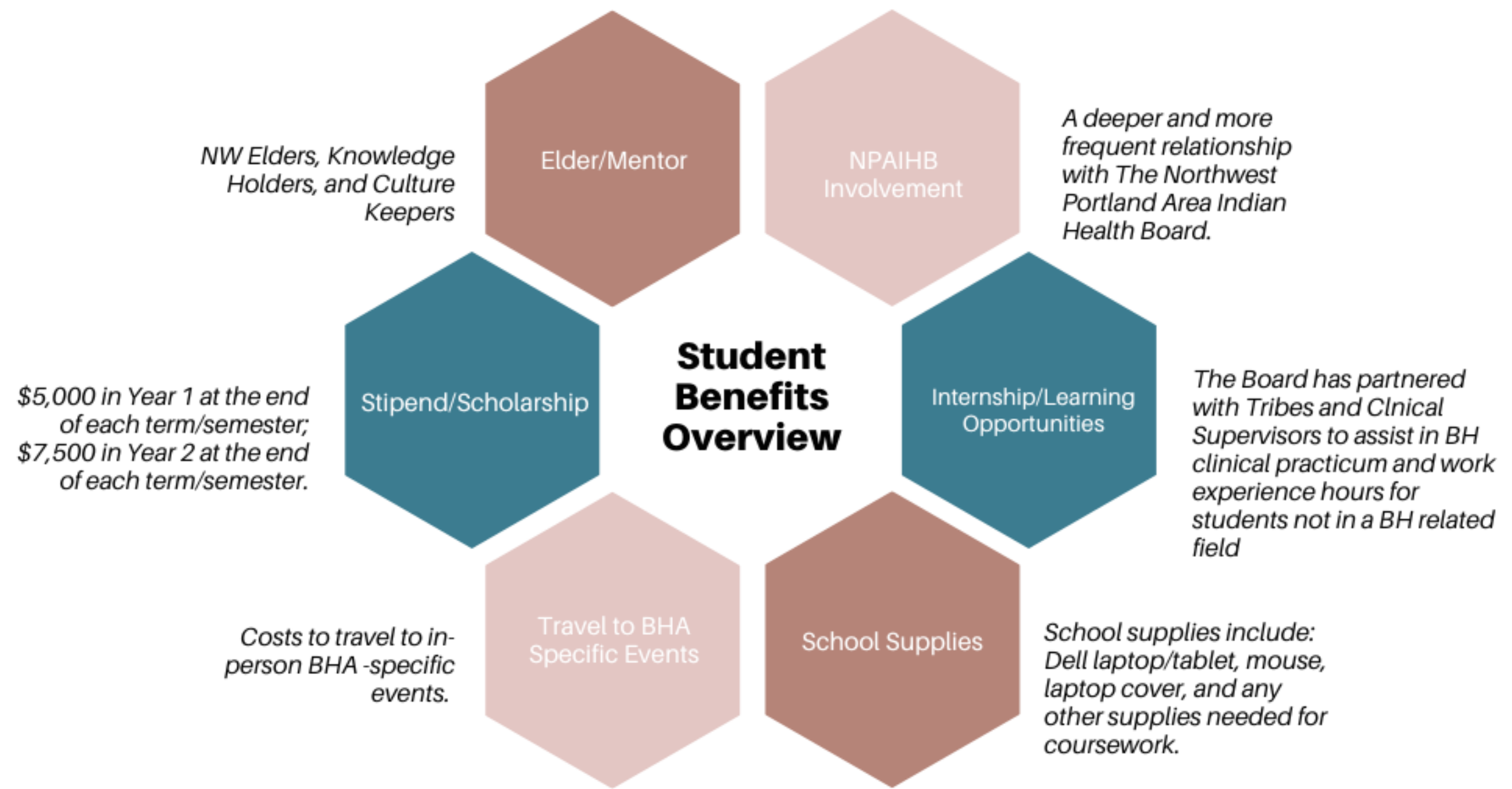
TCHPP WEBSITE // STUDENT ACCESS

Information, tools, and resources are updated monthly for BHA students, Tribes, and Clinical Supervisors. This includes:

- BHA FAQ Handbook
- Student Agreement Form
- Stipend Visual
- Student Check In Form
- & more!

BHA STUDENT BENEFITS & SUPPORT





**NORTHWEST PORTLAND AREA
INDIAN HEALTH BOARD**

The above shows the benefits of being a part of the Behavioral Health Aide cohort that is affiliated with the Northwest Portland Area Indian Health Board.

For those interested in this relationship with the Board, students must: take part in monthly check-ins with the BHA Student Support Coordinator; submit grades, class schedules, tuition ledgers & other school related documents; and self-identify a mentor.

Technical assistance is provided to Tribes and Tribal Health Organization who would like to know more about program benefits.

Funding is available on a first come, first serve basis and as funding time period allows.

WWW.TCHPP.ORG



Heritage University



Stipend/Scholarship

- Year 1=\$5,000 (3 payments of \$1,667)
- Year 2=\$7,500 (3 payments of \$2,500)
- **Total**=\$12,500



School Supplies

- School Supplies (as needed by Student)
- Year 1=\$2,400 (throughout the year)
 - Year 2=\$1,000 (throughout the year)



HU runs on a Semester (3) system

Therefore, Student will get three stipend payments once grades have been submitted at the end of each semester.

Northwest Indian College



Stipend/Scholarship

- Year 1=\$5,000 (4 payments of \$1,250)
- Year 2=\$7,500 (4 payments of \$1,875)



School Supplies

- School Supplies (as needed by Student)
- Year 1=\$2,400 (throughout the year)
 - Year 2=\$1,000 (throughout the year)



NWIC runs on a Term (4) system

Therefore, Student will get four stipend payments once grades have been submitted at the end of each term.

Total Stipend/Scholarship Amount = \$12,500 for 2 years

HRSA GRANT FOR TUITION/STIPEND: AN "EARN WHILE YOU LEARN" INCENTIVE

QUICK FACTS

NPAIHB STIPEND/SCHOLARSHIP



Earn While you Learn

Stipend/Scholarship & school supplies are provided by the Northwest Portland Area Indian Health Board (NPAIHB) Human Resources Services Administration (HRSA) grant.



Stipend: If Student has full tuition covered, then the stipend can be used for personal expenses. Sent directly to student via check in the mail.
Scholarship: If Student needs help with tuition coverage, the NPAIHB scholarship can pay up to \$12,500 in tuition. Sent directly to academic institution Finance department by NPAIHB staff.



Best of Both Worlds

If Student has tuition covered, but there's some extra fees or remaining amounts on the student account, then NPAIHB can take some of the Student stipend total to use for tuition. Whatever is used for tuition, will come out of the stipend.



Supply Reimbursement

The student have to cover the school supply costs up-front. Student will need to save the receipt, then send a copy of it to Katie Hunsberger to be reimbursed for the total cost.



FOR MORE INFORMATION CONTACT:

KATIE HUNSBERGER | BHA STUDENT SUPPORT COORDINATOR
 EMAIL: KHUNSBERGER@NPAIHB.ORG

BHA SCOPE OF PRACTICE

BHA levels 1-4/P vary depending on coursework, work experience, and incoming credits for higher education. All work must be completed under a Master's level or above clinician.

01

- Wellness promotion
- Education advocacy
- Community needs assessment
- Screening/intake/referral
- Crisis management
- Case management
- Orientation to Services
- Life skills development
- Psycho-education
- Individual & group interventions

02

- Substance use disorder (SUD) assessment
- SUD diagnosis
- SUD treatment planning
- SUD treatment implementation
- Community readiness assessment
- Individual group, family counseling

03

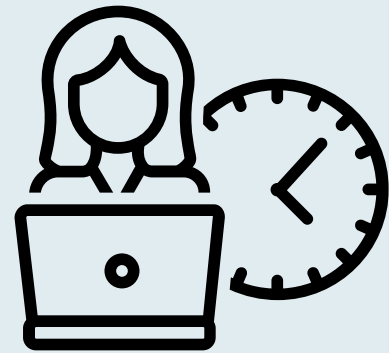
- Treatment planning & implementation for co-occurring disorders
- Child/outh services
- Clinical case review
- Quality assurance case review

04

- BHA mentoring
- Child-centered interventions



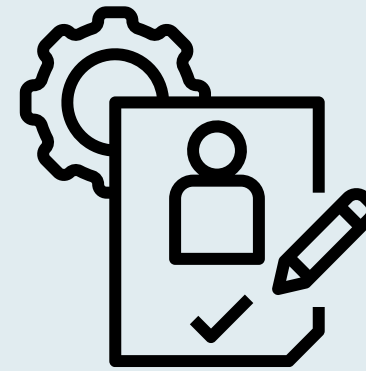
PACCB CERTIFICATION REQUIREMENTS



2,000 work experience hours = to 1 year of work under a Clinical Supervisor



Completed coursework at chosen Institution



200 practicum hours

BHA CERTIFICATION APPLICATION

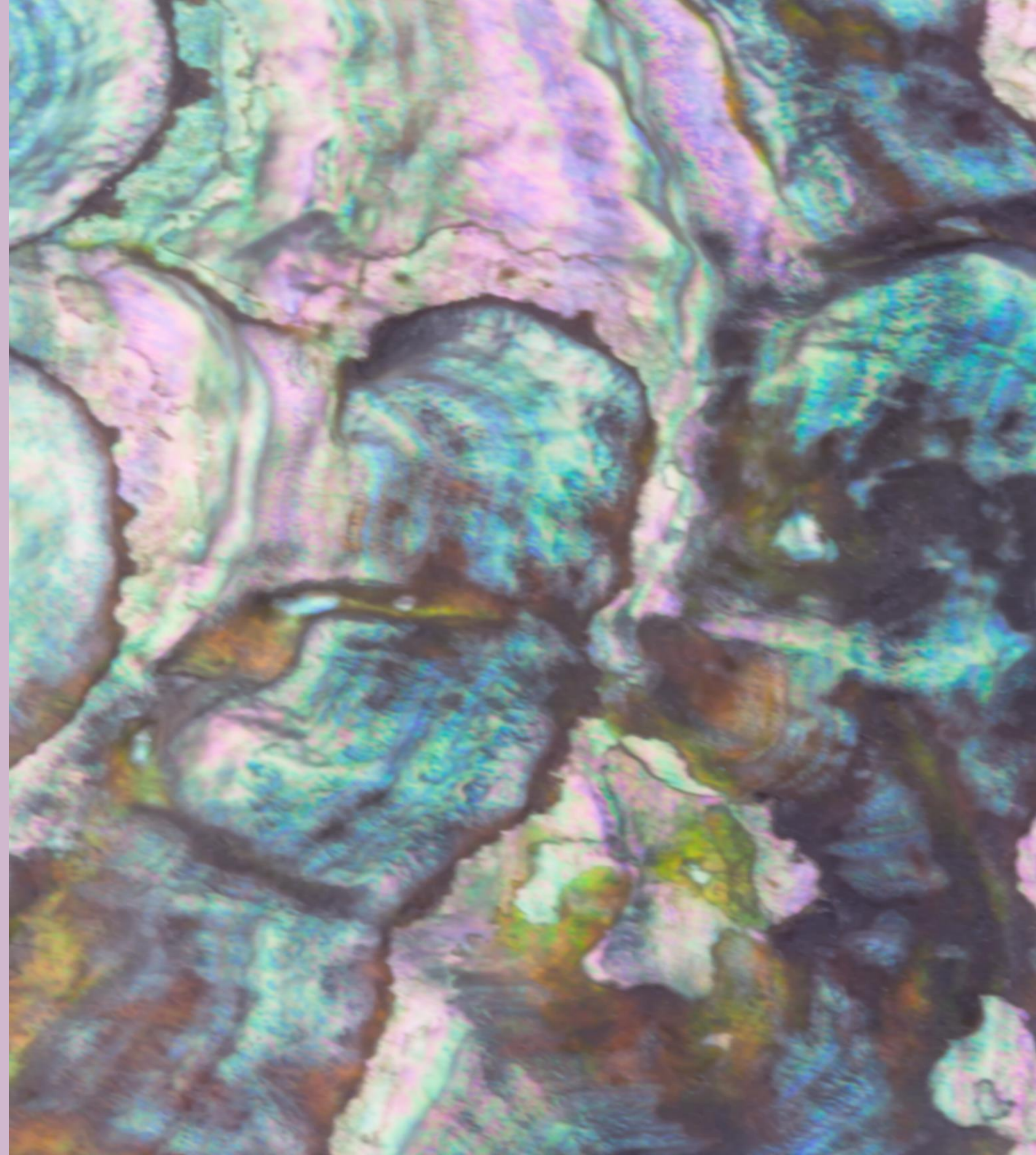
- Knowledge & Skills Checklist
- Clinical Practicum Log

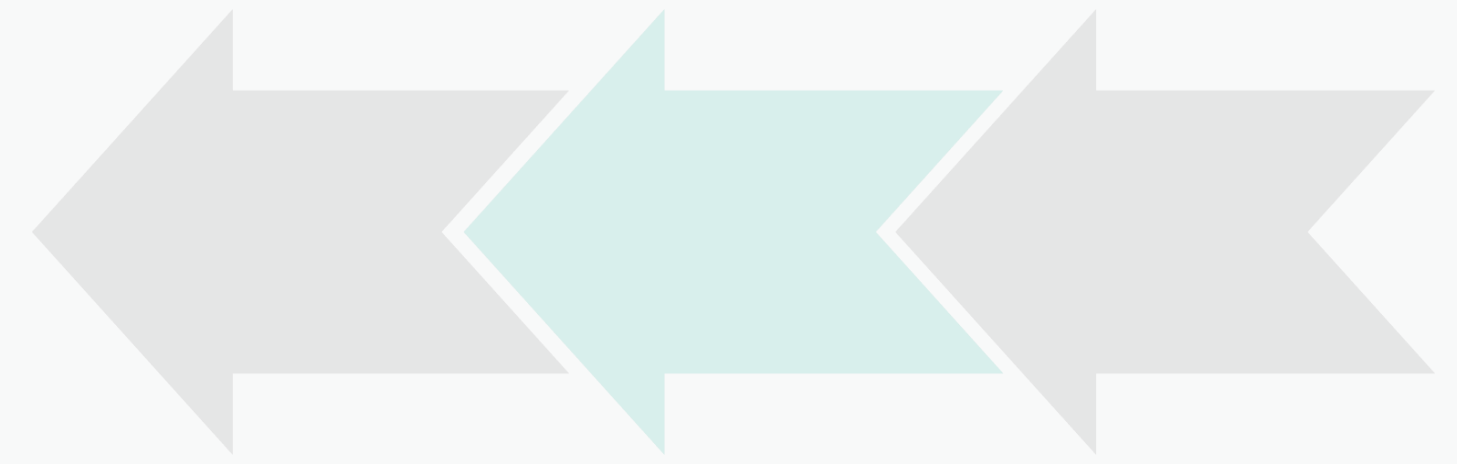
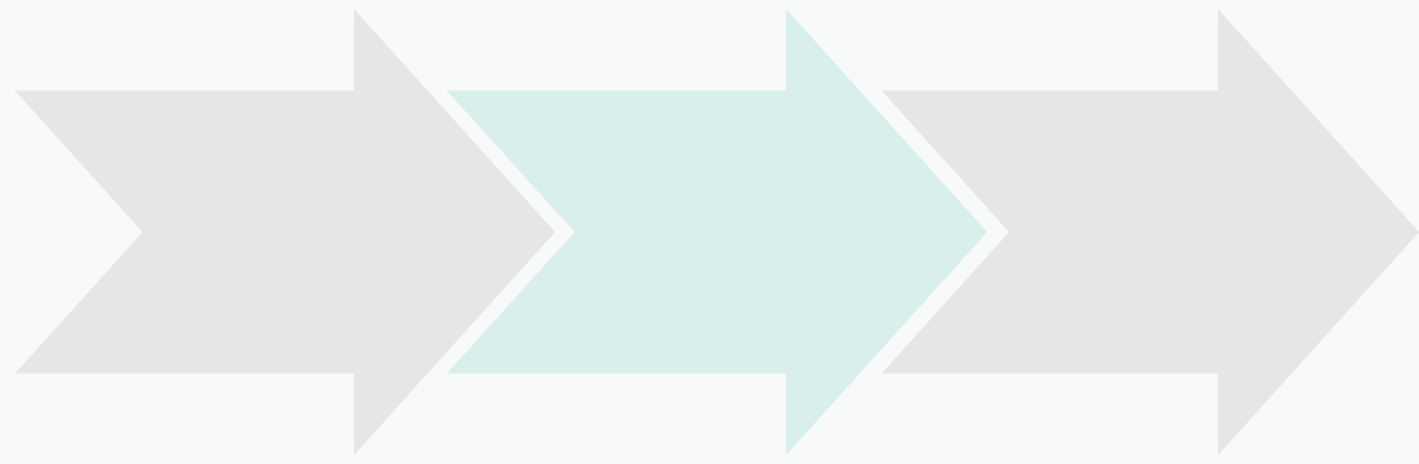
TCHPP BHA STAFF CONTACT INFORMATION

KATIE HUNSBERGER

BHA STUDENT SUPPORT COORDINATOR

Email: khunsberger@npaihb.org





Northwest Area Dental Health Aide Program



Primary Oral Health Providers

Working in IHS & Tribal clinics

Community Health Prevention & Education Programs



Dental Health Aide Program

Primary DHA I (PDHA I)

- Prevention champion
- Patient Education
- Fluoride Treatments

Primary DHA II (PDHA II)

- Dental assisting
- Sealants
- Radiology
- Above gumline prophylaxis
- ART

Expanded Function DHA I (EFDHA I)

- PDHA II duties plus:
- Simple restorative placement on prepared teeth

Expanded Function DHA II (EFDHA II)

- EFDHA I duties plus:
- Complex restorative placement on prepared teeth

DHA Hygienist (DHAH)

- Dental hygiene duties
- Prophylaxis
- Non-surgical periodontal therapy
- Root planing & Scaling
- Local anesthetic

DHA Therapist (DHAT)

- Dental exams
- Treatment plans
- Prep and restore
- Simple extractions
- Pre-fab crown placement



Provides an accessible education pathway into dental careers



Increases access to oral healthcare for Tribal Communities





DHAs in Dental Clinics

- Increase revenue/encounters
- Improve efficiency
- Reduce patient wait times
- Community-based care
- Providers work at top of scope
- Effective care:
 - Early
 - Frequent
 - Prevention-focused
 - Person-centered



Dental Health Aide Program Goals

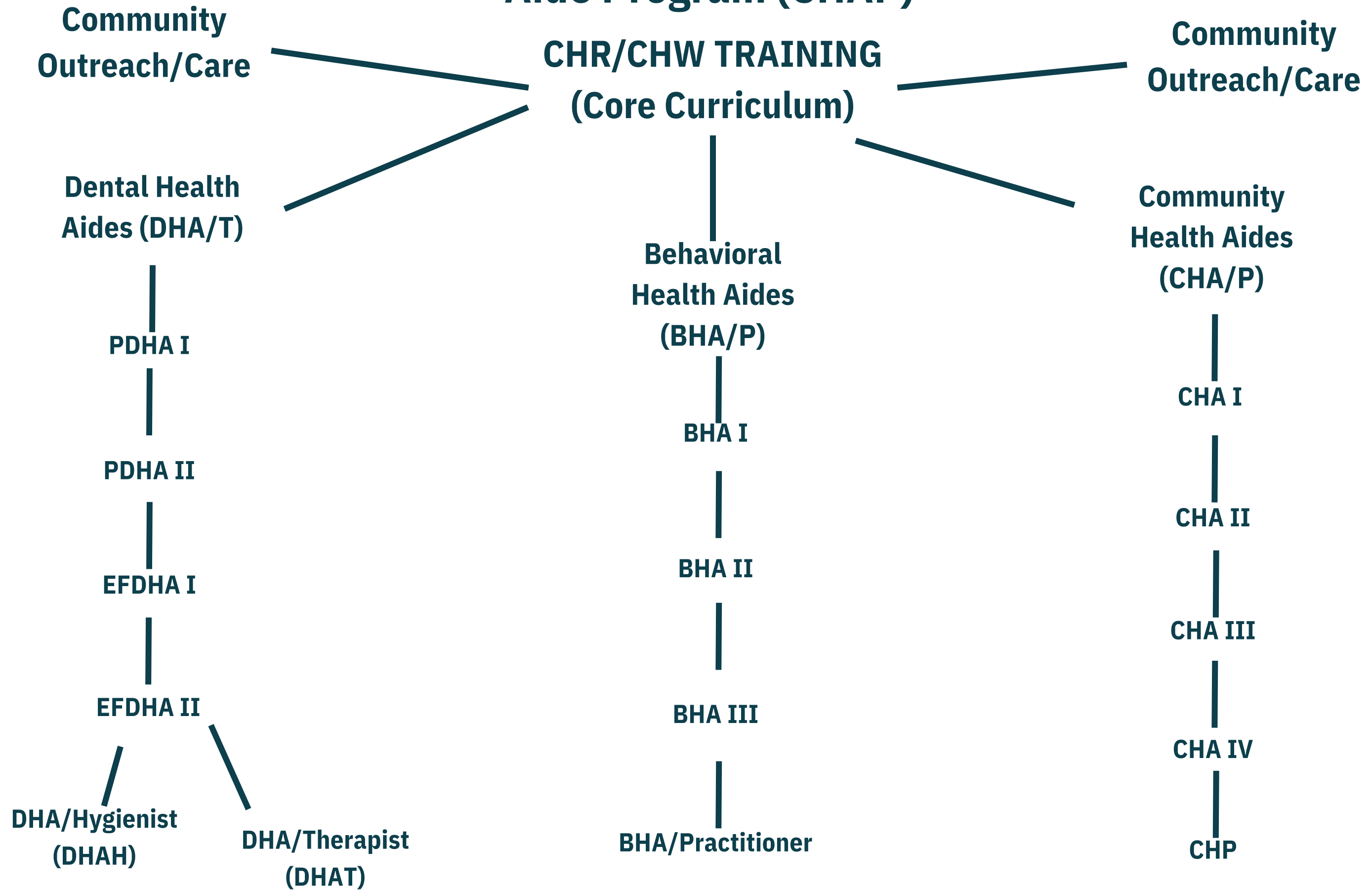
- Provide DHA training in Tribal communities
 - Develop DHA Training Module for Tribal Communities
 - Tribes implement program utilizing their own community members
- Develop central DHA training centers
- Integration of all types of DHAs into the dental team
- Increase the number of AI/AN dental providers in communities
- Increase access to oral healthcare
- Increase oral health equity



[This Photo](#) by Unknown Author is licensed under [CC BY-SA-NC](#)



Portland Area (OR, ID, WA) Community Health Aide Program (CHAP)



For more information please contact:

pready@npaih.org

kkuntzelman@npaih.org

mdavis@npaih.org

Dental Health Aide Program

<https://www.tchpp.org/about-dhas>



Primary Dental Health Aide I PDHA I	Primary Dental Health Aide II PDHA II	Expanded Functions Dental Health Aide I EFDHA I	Expanded Function Dental Health Aide II EFDHA II	Dental Health Aide Hygienist DHAH	Dental Health Aide Therapist DHAT
Required Courses	Required Courses	Required Courses	Required Courses	Required training & education	Required training & education
	PDHA I and:	PDHA II and:	EFDHA I and:		
Core Curriculum	Advanced Dental Procedures	Basic Restorative Functions	Advanced Restorative Functions		
Primary Oral Health Promotion and Disease Prevention	Community Based Dental Practice	Prefabricated Crown Placement			
	One or more of the following: Dental Assistant Functions Sealants Dental Prophylaxis Radiology Atraumatic Restorative Treatment	Preceptorship - 6 months or 800 hrs	Preceptorship - 6 months or 800 hrs	Accredited DH Program or Board approved DHAH Program	Accredited DT Program or Board Approved DHAT Program
Preceptorship - specific # of procedures	Preceptorship (s) - specific # of procedures				

Core Curriculum

To prepare the Health Aide to work in Tribal communities and clinics, the following are included in the Core Curriculum:

1. [The Role of Health Aides](#)
2. [Scope of Work for Health Aides](#)
3. [Medical Ethics](#)
4. [Legal Issues](#)
5. [Consent for Treatment](#)
6. [State Mandatory Reporting Requirements](#)
7. [Health and Disease](#)
8. [Infectious Disease Process](#)
9. [Standard Precautions](#)
10. [Introduction to Human Anatomy](#)
11. [Introduction to Pharmacology](#)
12. [Introduction to Medical History Taking](#)
13. [Medical Abbreviations and Terminology](#)
14. [Patient Record Documentation](#)
15. [Introduction to Clinic Management](#)
16. [Scheduling](#)
17. [Health Care System Access](#)

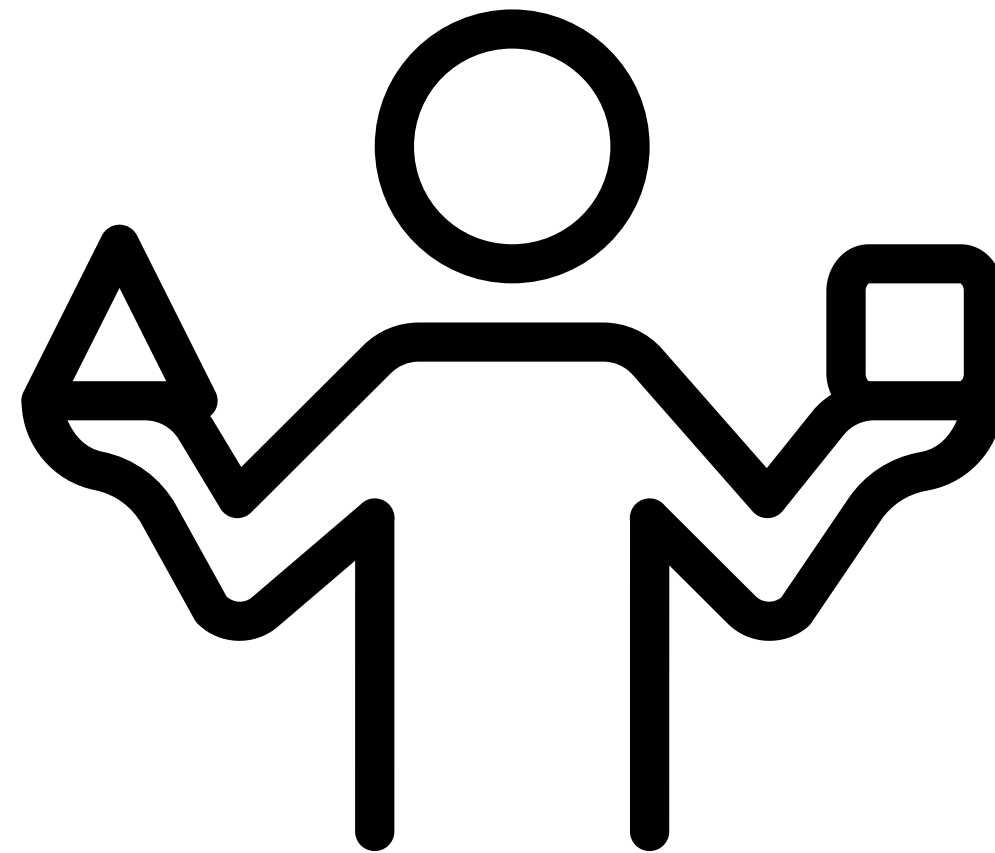


Subject Matter

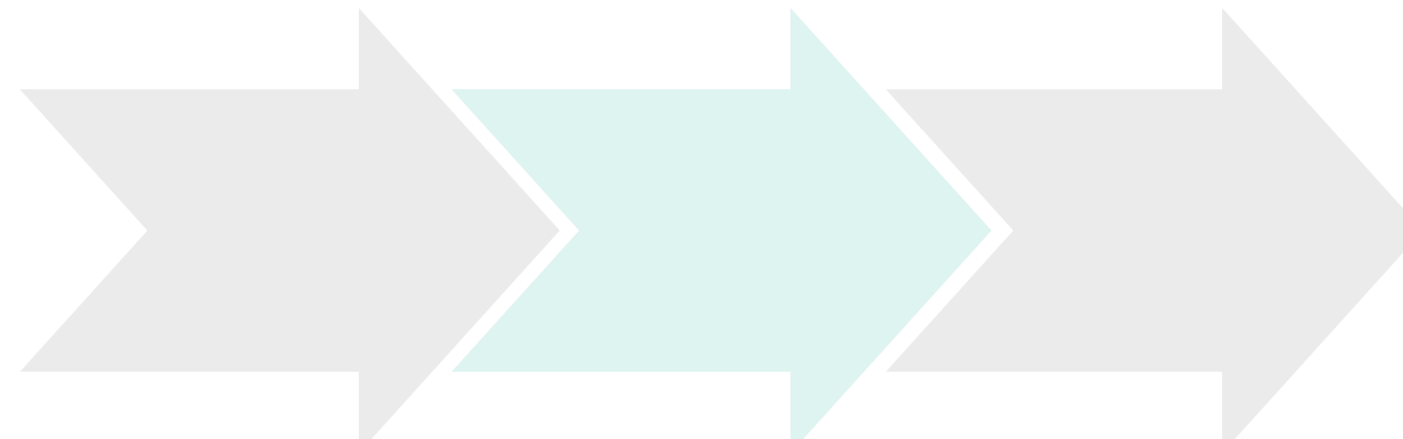


CHR/CHW → DHA

- Intro to Community Health Programs
- Medical Documentation
- HIPAA
- Medical terminology and abbreviations
- Patient Documentation
- Anatomy and Physiology
- Intro to body systems
- Medication Skills



- The Role & Scope of Health Aides
- Medical Ethics & Legal Issues
- Health and Disease
- Infectious Disease Process
- Standard Precautions
- Introduction to Human Anatomy
- Introduction to Pharmacology
- Introduction to Medical History Taking
- Dental Abbreviations and Terminology
- Patient Record Documentation/Consent for Treatment
- Introduction to Clinic Management/Scheduling
- Health Care System Access





Updates

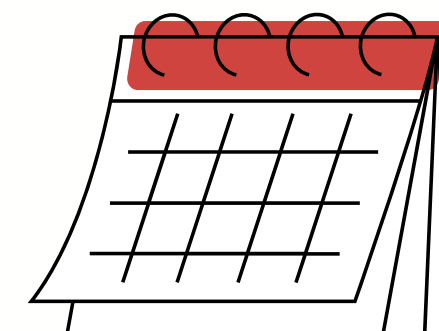


- The DHA Advisory Workgroup members have been reviewing PASP requirements for all levels of DHAs. Next meeting is 9/7/23 12-1 pm PT. Please contact Kari Kuntzelman/ kkuntzelman@npaihb.org if you are interested in participating
- The newly seated *dəx^wǰayəbus* Advisory Committee is established with 15 committee members and had their 1st meeting 6.27.23. Next meeting in Oct. Please contact Kari Kuntzelman at kkuntzelman@npaihb.org for more information
- The DHAT education program at SVC has selected its next cohort of students to begin in September 2023. Please contact Miranda Davis at mdavis@npaihb.org for more information
- Program and curriculum development continues for PDHA & EFDHA levels, including plans to develop a training module for Tribes to implement this program in their own communities
- Feasibility study in progress on a potential partnership between a TCU and DHA/T Program
- Please contact Pam Ready at pready@npaib.org, kkuntzelman@npaihb.org or mdavis@npaihb.org for more information about providing PDHA training in your community



Mark your calendar for the remaining 2023 meetings!

- 9/6/23
- 10/4/23
- 11/15/23



Dental Health Aide Program

NW Dental Health Aide Advisory Workgroup

The Dental Health Aide (DHA) Advisory Workgroup consists of community members and professionals dedicated to the development of the Portland Area Dental Health Aide Program, a discipline of the Community Health Aide Program (CHAP). Members provide guidance, oversight and expertise on how to best align the DHA program to fit the needs of NW Tribes.

About...

For more information contact:

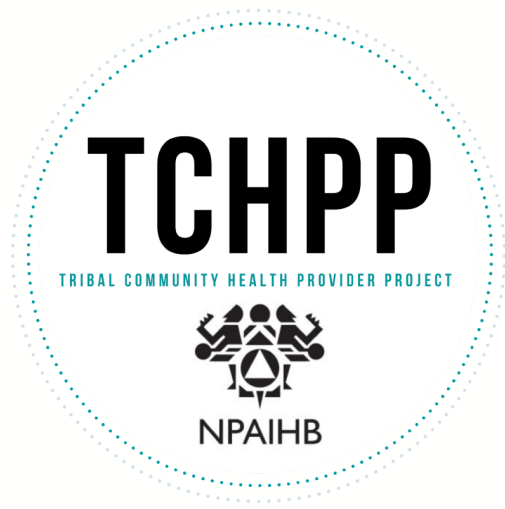
Pamela Ready, DHA Education Manager
pready@npaihb.org
(360)461-1149

Kari Ann Kuntzelman, DHA Education Specialist
kkuntzelman@npaihb.org
(305)799-8012

DHA Advisory Members can include:

- **Tribal and Federal Service Unit Dental Directors & Clinic staff**
- **Tribal Health Directors**
- **Northwest Tribal Leaders**
- **NPAIHB Tribal Delegates**
- **Additional NW community partners**





THANK YOU!

