



***Community Health Aide Project (CHAP)
Learning Collaborative: Indian County ECHO
Session:***

INDIAN + COUNTRY
ECHO
LEADING THE WAY 

*Growing the Ability to Deliver Quality Healthcare to
American Indian and Alaska Native People.*





NORTHWEST PORTLAND AREA INDIAN HEALTH BOARD

Indian Leadership for Indian Health

Established in 1972, the Northwest Portland Area Indian Health Board (NPAIHB or the Board) is a non-profit tribal advisory organization serving the forty-three federally recognized tribes of Oregon, Washington, and Idaho. Each member tribe appoints a Delegate via tribal resolution and meets quarterly to direct and oversee all activities of NPAIHB.

What WE Do:

NPAIHB Delegates create and update a strategic plan, which contains four main functional areas:

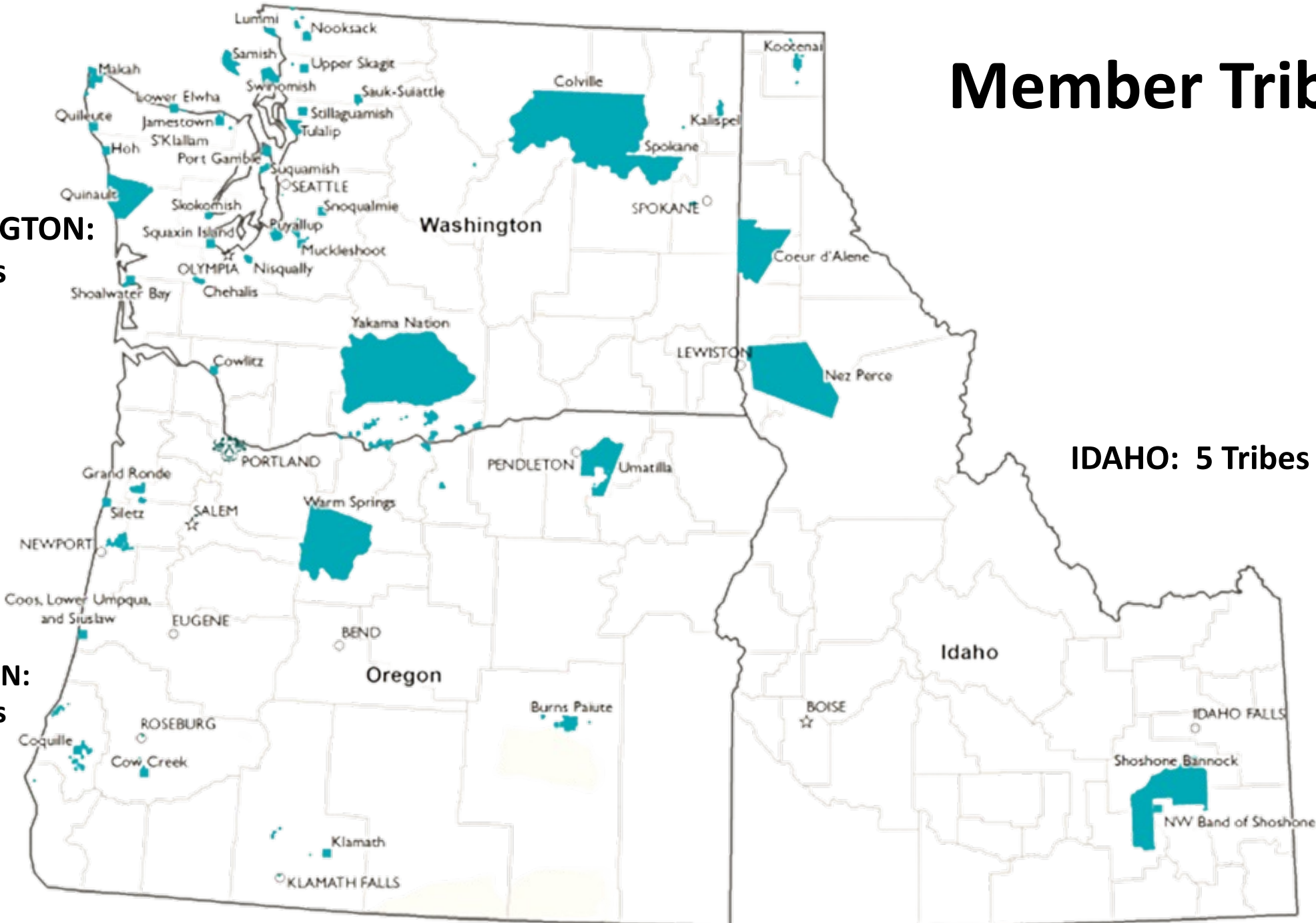
- Health promotion and disease prevention
- Legislative and policy analysis
- Training and technical assistance
- Surveillance and research

NPAIHB houses a tribal epidemiology center (EpiCenter), several health promotion disease prevention projects, and is active in Indian health policy.



Member Tribes

**WASHINGTON:
29 Tribes**



IDAHO: 5 Tribes

**OREGON:
9 Tribes**

NORTHWEST CHAP:

Tribal Community Health Provider Program (TCHPP)

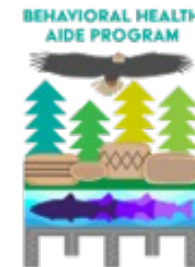
ESTABLISHED IN 2015



Dental Health
Aide/Therapist
(DHA/T)



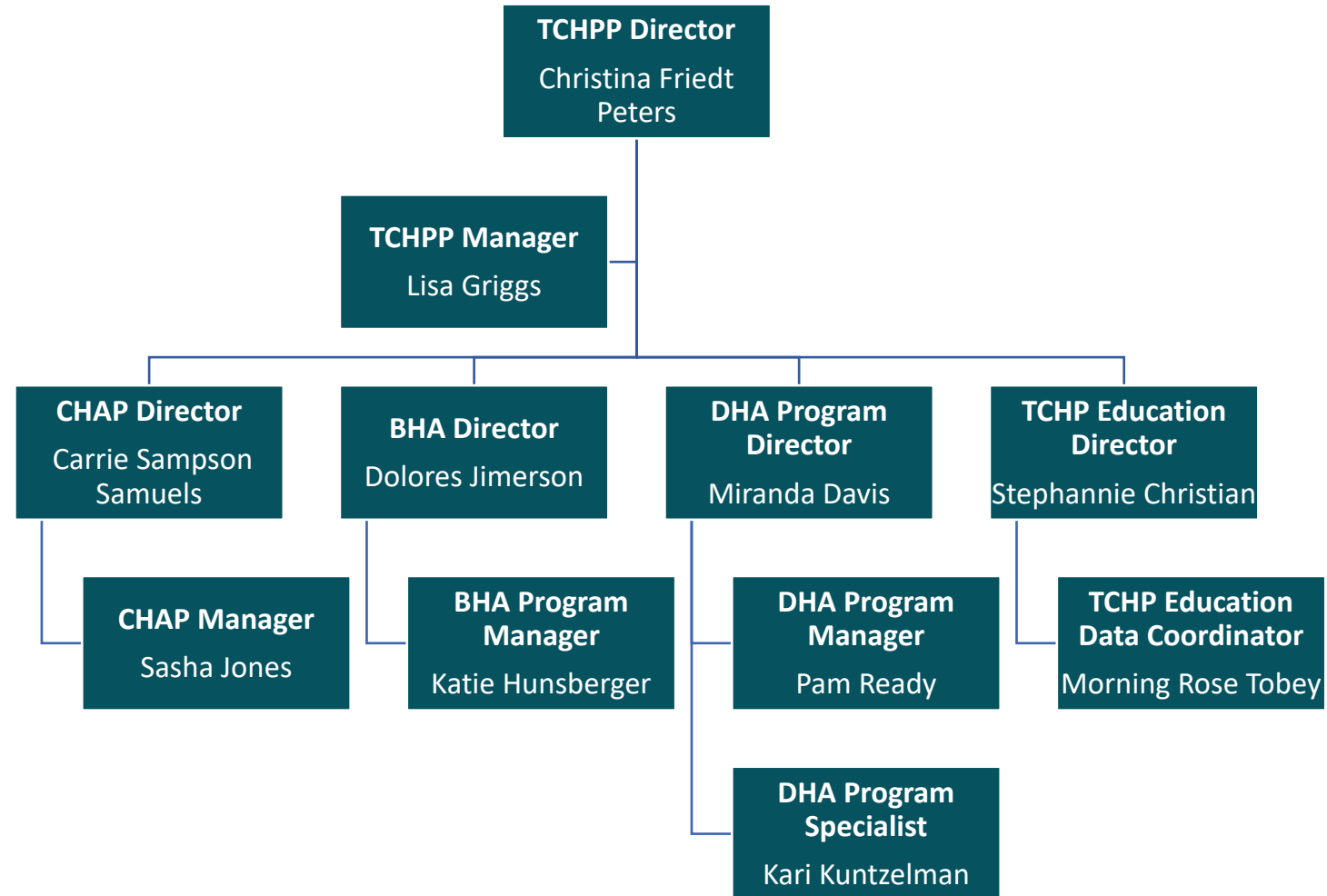
Behavioral Health
Aide/Practitioner
(BHA/P)



Community Health
Aide/Practitioner
(CHA/P)



Tribal Community Health Provider Program Team





Dental Health Aide (DHA)

Northwest Dental Health Aide Program



Dental Health Aide Program

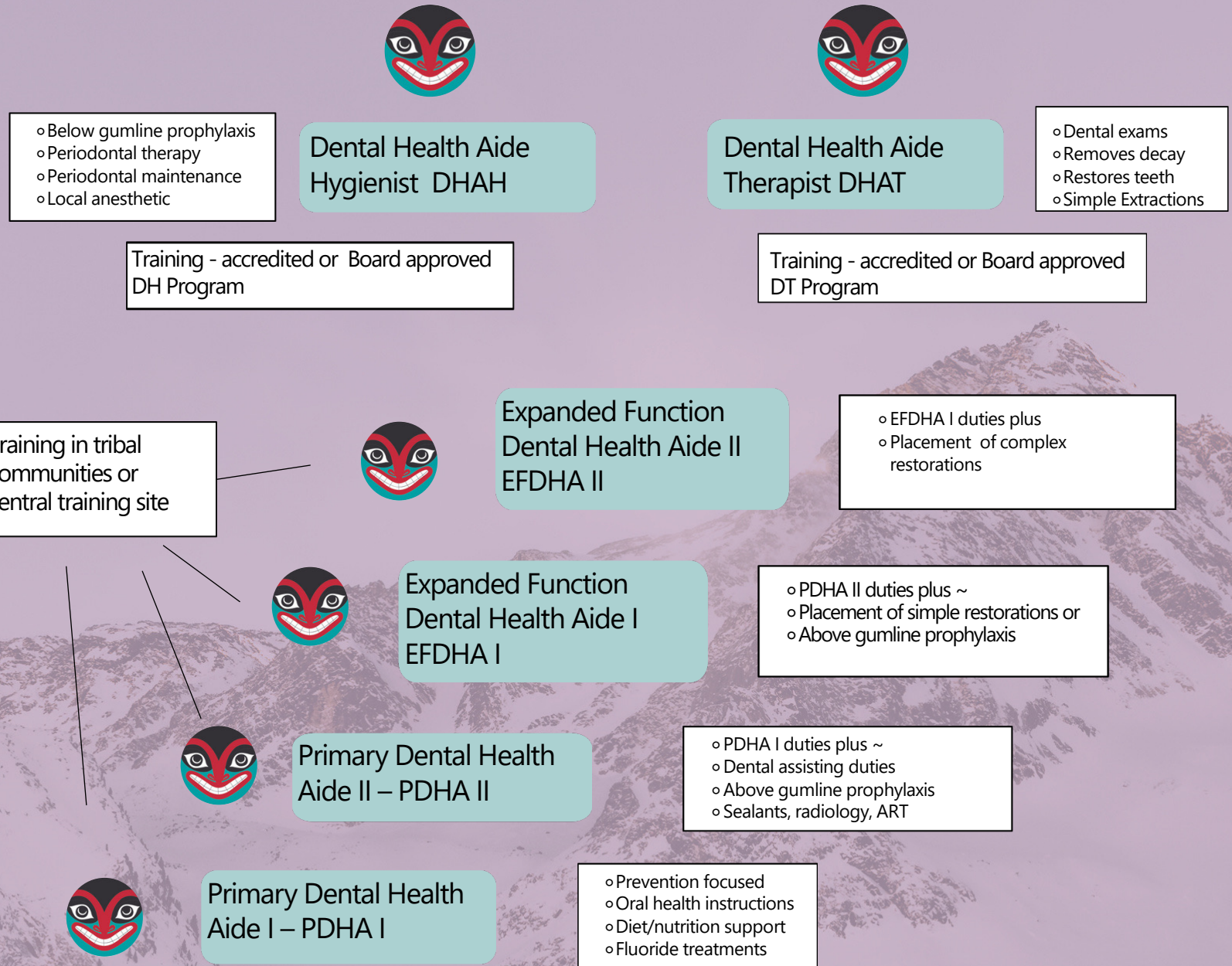


Dental Health Aides from the Community

- More likely to remain long-term
- Provide culturally relevant and trauma-informed care
- Builds patient/provider trust

The Dental Health Aide Program

- **A series of accessible oral health careers**
- **Working in Indian Health Service and Tribal Communities**
- **All types of DHAs are supervised by a dentist or DHAT**
- **Federally certified**





Recruitment

- Tribes recruit community members
 - Newsletters / Social media
 - Clinical internship opportunities
 - Advancement for existing staff
- Presentations
 - Quarterly Board Meetings
 - Tribal council meetings
 - Site visits
 - Conferences
- Online resources
 - Website
 - Social Media
 - Videos
- Partnerships
 - Tribal schools
 - Northwest Native American Center of Excellence



Outreach to Tribal youth



- Partnerships with Tribal schools
 - Career and Technical Education course unit
 - DHA Core Curriculum introduction
 - Hands-on enrichment courses
- Career fairs

Careers in
Dentistry

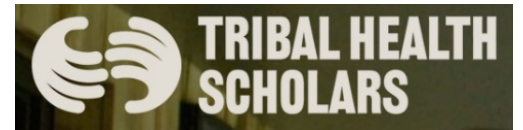




Partnership with Northwest Native American Center of Excellence



Dental Health Aide Program



<https://www.wearehealers.org/alaska-dental-therapy-education-program>



WE ARE
HEALERS

Mission Team Programs Projects

Donate Contact





dəx^wǰayəbus-Dental Therapy Program



Step 1. Inquiry Form



Under Program Information,
->Anticipated Start, Choose *Fall 2024*
->Primary Program of Interest, Choose *Dental Therapy Program*



- Next cohort begins September 2024
- Applications due May 1, 2024
- Tribal sponsorship recommended
- Contact Miranda Davis at mdavis@npaih.org

The program

- Location: Mount Vernon Campus, Skagit Valley College *and* Swinomish Dental Clinic in La Conner, WA.
- Duration: 3-year curriculum program consisting of nine (9) consecutive quarters of intensive academic and clinical work.
- Degree: Associate of Applied Science (AAS) in Dental Therapy
- Class size: Twelve students max per cohort are accepted to begin each Fall.
- Application(s): [Inquiry Form](#) and [Dental Therapy Program Application](#).

Minimum Qualifications to Apply

- High school diploma or equivalent.
- 200 hours of dental-related experience.
- Clinical site for Qtr. 9-Preceptorship confirmed & Supervising Dentist committed as part of required clinical experience.
- Pass a background check & drug screening + up to date vaccination record for healthcare workplace.

Sign-up to attend a program briefing for pertinent program information by emailing dentaltherapy@skagit.edu.





Behavioral Health Aide (BHA)



CHAP Infrastructure Development: Behavioral Health Aide Considerations

Dolores Jimerson, LCSW (Seneca)

Behavioral Health Education Director

Katie Hunsberger, MPP (Yavapai)

Behavioral Health Aide Program Manager

INDIAN + COUNTRY

ECHO

LEADING THE WAY ➡➡➡

*Growing the Ability to Deliver Quality Healthcare to
American Indian and Alaska Native People.*

CHAP Infrastructure Development



Pre-Operational

Recruitment


Behavioral Health

- Consider limited level of awareness in most places outside of Alaska on what behavioral health aides/practitioners are, information learned in Phase 1. Awareness & Consent.
- Scan of existing clinics and programs to assess for level of awareness of Behavioral Health Aides.
- Similar to Community Readiness, use one on one visits to share information and garner support, interest.
- Consider if there are existing peer support specialist positions in place which could lead to curiosity on what makes BHAs different.

Social Marketing

- Building upon what's learned in Phase 1 of Awareness & Consent key messages are created to support Recruitment.
- *TCHPP promotes tribal self-governance and tribal sovereignty by removing barriers, fostering education pathways, and promoting leadership for AI/AN people.*
- *TCHPP addresses social and structural determinants of health by working with tribes, tribal health programs, and tribal leaders to increase access and improve health outcomes.*
- ***TCHPP focuses on facilitating programs that allow our communities to thrive in the way our ancestors intended.***

Student Recruitment

- 
- Successful recruitment of health aides by tribes, tribal organizations, and IHS is the critical first step in the development of CHAP infrastructure with the goal to recruit and retain health aide candidates who will serve in tribal communities. Health aide candidates must meet eligibility criteria according to their discipline.

TARGET AUDIENCE

Identify stakeholders, allies, and advocates of higher education who can attest to strengths.

PARTNERSHIPS

Build ongoing and consistent partnerships with other Native organizations that have access to a larger pool of prospective students or who have a larger social media presence. ✓

* STUDENT SUPPORT COORDINATOR

Hire someone to help prospective students and assist other BHA Coordinators. Key roles: recruitment, scholarship searching, in-person high school recruiting, reaching out to Tribal departments, build ongoing relationships.

BRAINSTORM

PROGRAM FEATURES

Sharing stories, updates, and success through monthly newsletters.

BRANDING

Acknowledge the story behind the BHA logo and its significance to the program itself. Honoring the story on program development and timeline.

PROMOTION ☆

Create material that is fitting to the tribal region. Use consistent colors, themes, and images so that they "ring a bell."



Community Health Aide (CHA)



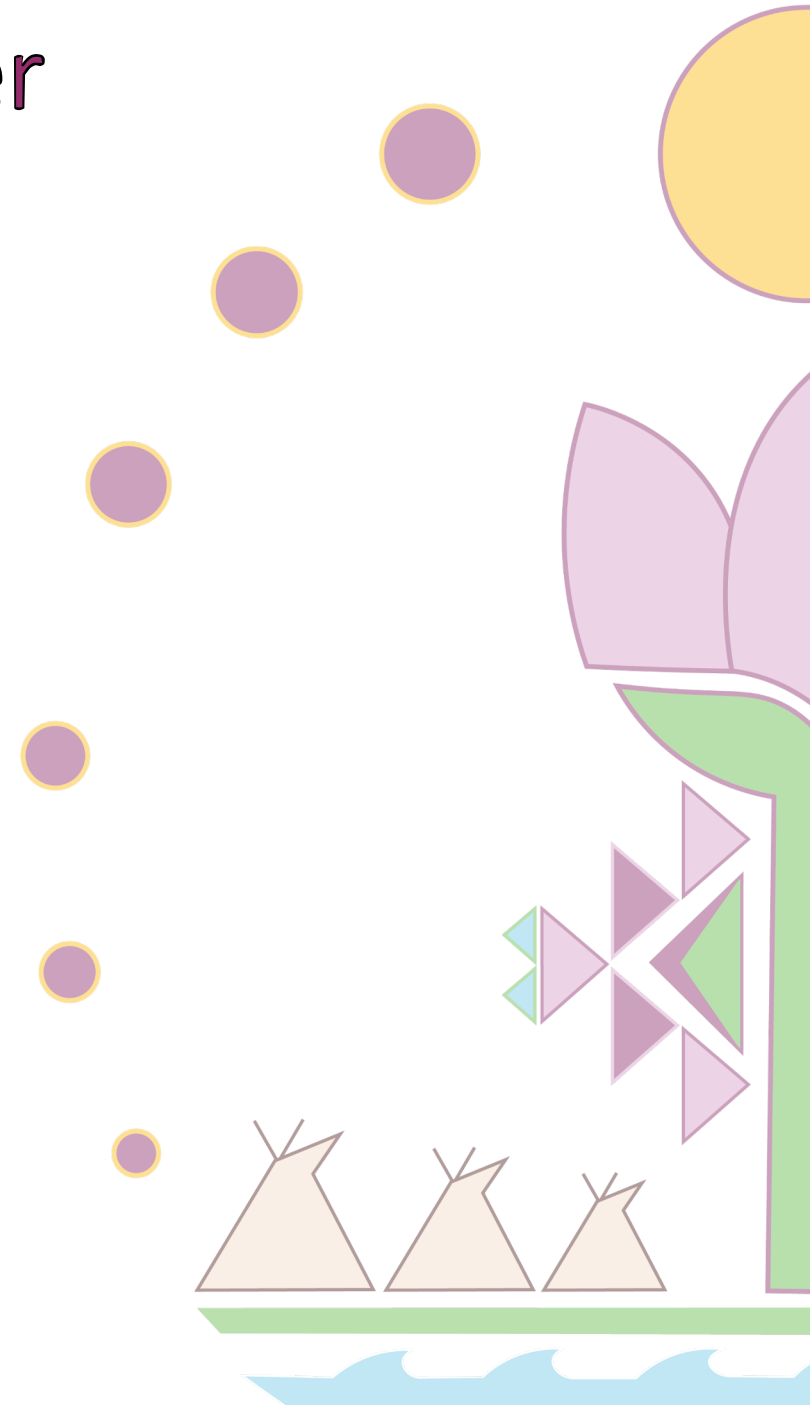
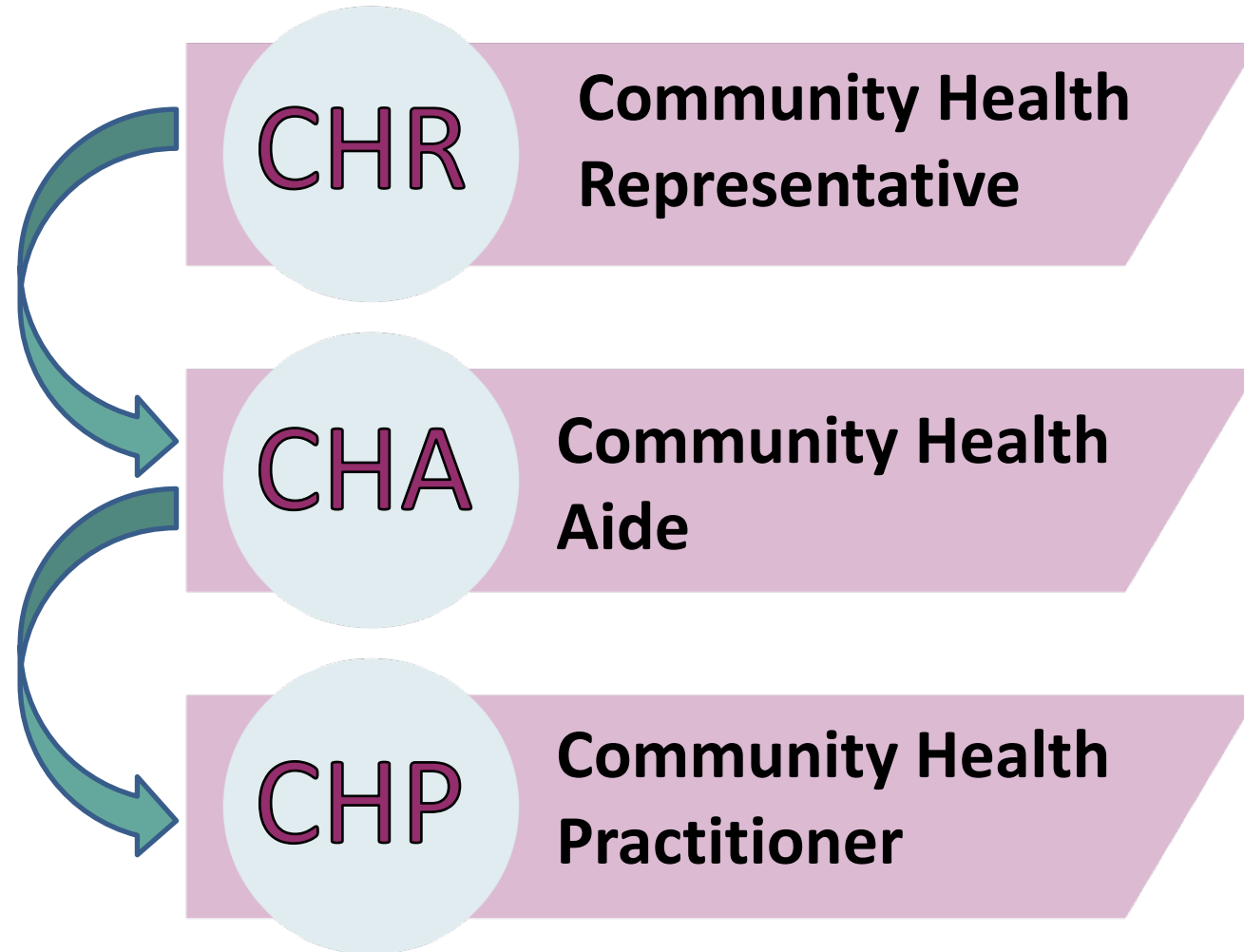
Community Health Aide/Practitioner

Community Health Aide Practitioners (CHA/P) are certified primary care clinicians who have close cultural ties and connections to the communities they serve. In Oregon, Washington, and Idaho they are community members of AI/AN communities who attend CHA/P educational programs approved by the Portland Area CHAP Certification Board and work within the Tribal Health and Human systems.

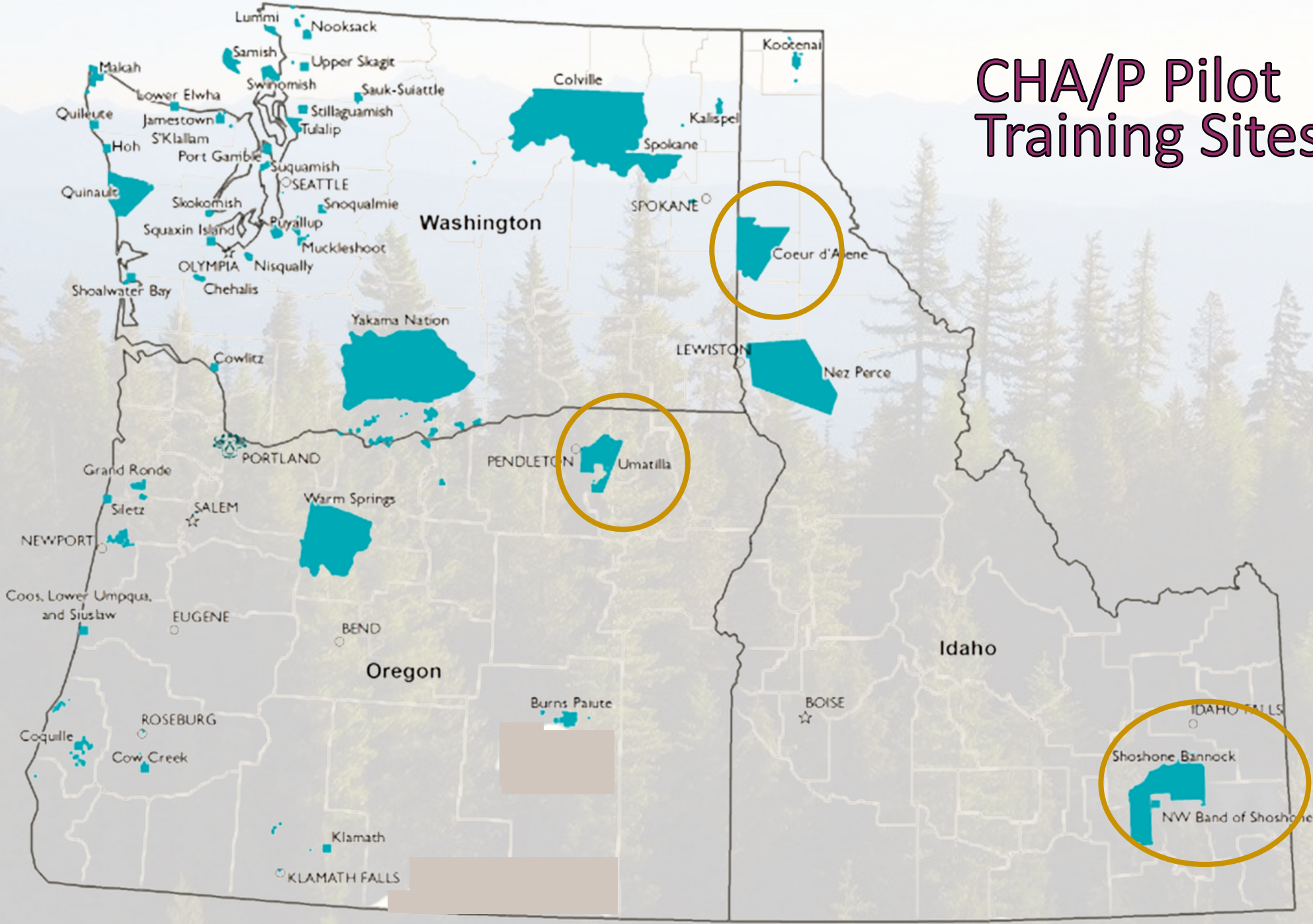
- *A CHA/P practices under the supervision of a licensed clinical provider, such as a physician or advanced practice provider (PA, NP).*
- *Basic education for CHA/P includes didactic learning, skills practice and training, and clinical time providing patient care with the guidance of an advanced practice provider or physician.*

Community Health Aide/Practitioner

Levels of CHA/P

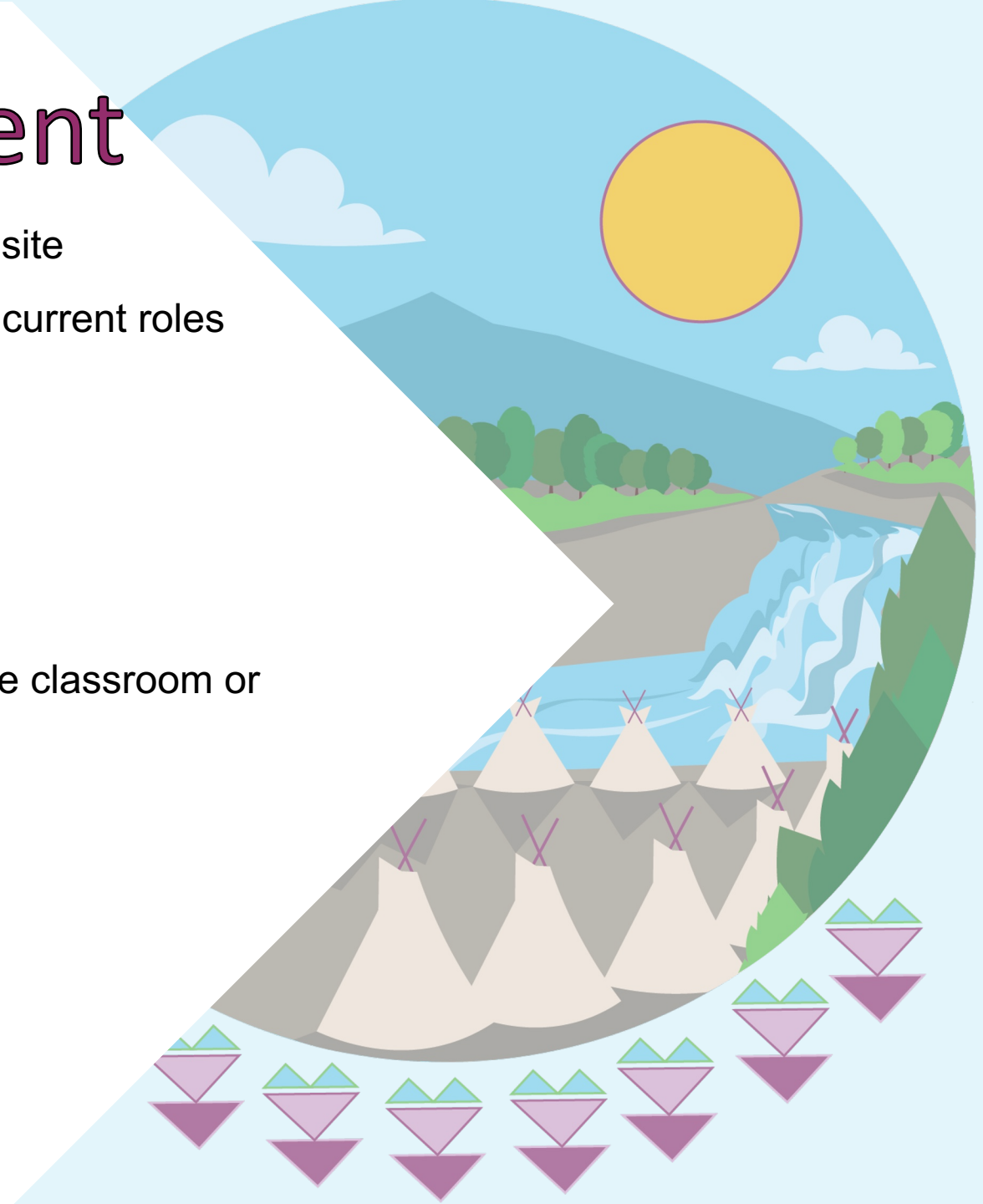


CHA/P Pilot Training Sites



CHA/P Student Recruitment

- ▶▶ Each CHA/P Pilot Site has selected up to 2 students per site
- ▶▶ Students were selected by the tribal health organization, current roles include:
 - ▶▶ Medical receptionist
 - ▶▶ CHR
- ▶▶ The student to instructor ratio 2:1
- ▶▶ CHA/P training will require the students to be in the online classroom or performing clinical skills up to 50% of the work week
- ▶▶ Requirements:
 - ▶▶ Must have a high school diploma or equivalent
 - ▶▶ Testing at an 8th grade level of reading and math
 - ▶▶ Be a tribal or community member
 - ▶▶ Employed by a tribal health organization/clinic



Role of Tribal Health Organization in Supporting CHA/P Students

- ▶▶ Determine how CHA/Ps will be employed within clinics/facilities
- ▶▶ Create positions and hire CHA/P's
- ▶▶ Provide appropriate education leave and flexible work schedule while in training
- ▶▶ Provide Physician and/or Advance Practice Provider (APP) for supervision, education and to take CHA/P patient report
- ▶▶ Arrange for day-to-day supervision, direction and support for the CHA/Ps in a number of different ways
- ▶▶ Provide compensation and benefits to CHA/P's
- ▶▶ Allow support staff to participate in various CHA/P Program Boards and Committees





Community Health Representative (CHR)

The Community Health Representatives (CHR) Program is an Indian Health Service (IHS) funded, tribally contracted/granted and directed program of well-trained, community-based, health care providers, who provide health promotion and disease prevention services in their communities.



Core Core Course with ISU:

Week 1	Intro to the course, what is a CHR, Boundaries in Health Care
Week 2	Cultural Competency, Communication Skills, Health Disparities
Week 3	Community Outreach and Advocacy, Time Management, HIPPA
Week 4	Community Needs Assessment, Case Study Review
Week 5	Health Literacy and Motivational Interviewing
Week 6	Care coordination, Health Insurance, Tribal Health Systems
Week 7	Community Engagement, Self-Care
Week 8	Interview and Final Project + Completion of 5 HSM's

CHR Advanced Course through NPAIHB:

Week 1	Introductions, Introduction to Google Classroom, Expectations of course	Intro to CHA, BHA, and DHA Programs
Week 2	BHA Program Topic	BHA Program Topic
Week 3	DHA Program Topic	Life Systems
Week 4	Ethics, Professionalism, Medical-Legal Information HIPPA, Vaccine Hesitancy	Health and Wellness Handwashing, PPE and Sterile Techniques
Week 5	Emergency Preparedness, Home check list and fall precautions Aging and Elder Care	Vitals Signs HTN
Week 6	Diabetes	Health Equity Closing



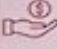



COMMUNITY HEALTH REPRESENTATIVE EDUCATION PROGRAM

WHAT IS A CHR?

The Community Health Representative (CHR) Program is a unique concept for providing health care, health promotion, and disease prevention services. CHRs have demonstrated how they assist and connect with the community, and their work has become essential to the spectrum of Tribal community-oriented primary health care services. CHRs are great advocates, in part, because they come from the communities they serve and have tribal cultural competence. Their dedicated work has assisted many to meet their healthcare needs. The health promotion and disease prevention efforts that CHRs provide have also helped people from the community improve and maintain their health. By providing health education and reducing hospital readmissions, CHRs have contributed to lowering mortality rates. The demand for CHRs continues to grow.

NOW RECRUITING FOR JANUARY 2024 COHORT!

-  Northwest Portland Area Indian Health Board is offering CHR training through Idaho State University!
-  Core course training offers culturally specific curriculum designed for Indigenous students. Recruiting anyone interested in becoming a CHR or taking on a medical entry level position!
-  Students taking only the Core Course will be eligible for around \$1,000. Students who continue onto Advanced Course will receive an additional \$3,000.
-  Northwest students will receive priority enrollment.

BENEFITS

- 1. Career Advancement Opportunity**
Keeping indigenous talent in your communities and Tribal Health Organization rather than having them be drawn out of the community.
- 2. Increased Educational Opportunity**
Advance your knowledge as a CHR and use this opportunity to step into becoming apart of any



COMMUNITY HEALTH
REPRESENTATIVE PROGRAM
Powered by NPAIHB

AT A GLANCE THE COURSE

Start date 01/11/24

- Online at your own pace
- 12 hrs online class sessions + 36 hrs of homework = 48 hrs total
- 8 live zoom sessions
-Thursdays 3pm-4:30pm PST
- Course will be completed over 8 weeks



MORNINGROSE STEPHANNIE



Recruiting Pearls

If you want to recruit more people, remember M.O.R.E

Multiple Platforms: Advertise across different types of platforms to reach more people. Facebook, emails, paper flyers, etc.

Offer Goodies: Everyone loves goodies, so if you're able to offer a stipend, discounts, prizes, or supplies. Make sure to highlight that on your flyer.

Repetition: Send out your recruitment information multiple different times.

Early: Send out information early enough that people have time to think about it and respond. Especially if there is a deadline.



For more information:

Contact Lisa Griggs, TCHPP Manager @
lgriggs@npaib.org

Visit: www.tchpp.org

Indian Country
EHCO www.indiancountryecho.org